

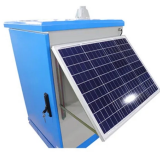
MIG welding distribution box



MIG welding distribution box



Stainless Alloys Products to meet the process requirements of many stainless steel and high alloy welding applications. Submerged Arc Flux and wire combinations for single- and multiple-pass ...



The butt-welding and flash removal process takes only minutes, and the two wire ends may be joined during the welding cycle. The patented box design includes a ring and tabs to keep the wire from ...



Whether you need a new MIG welder, a rental TIG welder, a virtual welding training simulator or something else, rent-to-own welders from leading brands such as Lincoln Electric and Miller are a ...



Explore weatherproof outlet boxes designed for welding machines and industrial equipment. Heavy-duty construction built to last.



Full of the quality-proven MIG wire that you depend on, this redesigned octagonal box gives users tangle free winding from beginning to end – all while saving up to 5.1lbs of carboard and 2.2...



Our Custom Power Distribution Boxes are engineered to meet your exact specifications and industry requirements. With expert craftsmanship and precision manufacturing, we create tailored solutions ...



Optimize your multi-operator welding setup with the Lincoln Electric K1736-1 Distribution Box. Connects up to 10 Multi-Weld 350 units via a copper bus bar. Includes 4 pig-tails.



The Arc Welding Machine Distribution Box is specifically designed to safely distribute electrical power to arc welding machines. It ensures stable voltage supply, protects against overcurrent, and provides a ...



These power distribution centers are protected by a GFCI module giving the use not only ground fault protection, but also open neutral and reverse phasing protection.



Evenly distribute shielding gas for high-quality MIG welds. Direct, start, and stop the flow of MIG welding wire and current to the spot you're welding. Use with MIG welders to fuse metals together. ...

Contact Us

For more information, pricing, or custom energy solutions, please contact us:

Website: <https://gdroofing.co.za>

Email: sales@gdroofing.co.za

Phone: +27 72 418 9365

Address: 22 Electron Avenue, Isando, Johannesburg, 1600, South Africa

This document is for informational purposes only. Specifications subject to change without notice.

