

Main distribution box cable specifications and models



Overview

This publication contains the following new or updated information. This list includes substantive updates only and is not intended to reflect all changes.



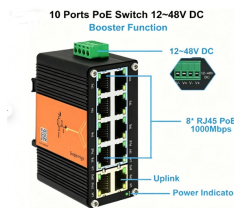
Main distribution box cable specifications and models



Distribution Box Cables install into standard junction boxes (by others) by means of a standard cable connector. PC-DB Electrical Distribution Box Cable provides an interface between hard wiring & ...



DC Micro Style Distribution Boxes Four-pin, One Signal per Port Cable Connector Distribution Box Eight-port DC Micro Distribution Box Specifications



The document specifies the quantities and descriptions of distribution boxes, cables, and an online UPS system. It includes 6 items of distribution boxes for control rooms, stages, and near the UPS with ...



Distribution Box Cables install into standard junction boxes (by others) by means of a standard cable connector. PC-DB Electrical Distribution Box Cable provides an ...



We select each cable component according to specific requirements, and then the end product is manufactured to the highest specifications, meeting international standards such as ISO 9002, IEC, ...



Shows you drawing designs, tell us how you want them to be seen, and what materials you prefer, and our team of experts will create a 3D model for you. We lead the way when it comes to producing high ...



Explore Main Distribution Boards (MDBs) design, wiring & how they differ from SDBs. Ensure safe, efficient, and reliable power for your project.



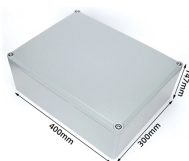
Sufficient knockout features in box wrapper and gland plate ensure easy routing of cables. Easy to remove knockouts and gland plate with easily breakable features reduce installation time.



The Main Distribution Box (MDB) is the heart of the Global IFS Cable System Modular Wiring System. It provides power to the Floor Electric Modules and/or Secondary Power Distribution Boxes via Double ...



Easy Installation of outgoing The design of the pan assembly facilitates the installation of outgoing devices. Availability of mixing Mixing two different types of outgoing devices can be provided in ...



BLOCK (PDB) Mersen power distribution blocks provide a safe and easy method of splicing cables, splitting primary power into secondary circuits and fulfilling requirements for fixed junction ta.

Contact Us

For more information, pricing, or custom energy solutions, please contact us:

Website: <https://gdroofing.co.za>

Email: sales@gdroofing.co.za

Phone: +27 72 418 9365

Address: 22 Electron Avenue, Isando, Johannesburg, 1600, South Africa

This document is for informational purposes only. Specifications subject to change without notice.

