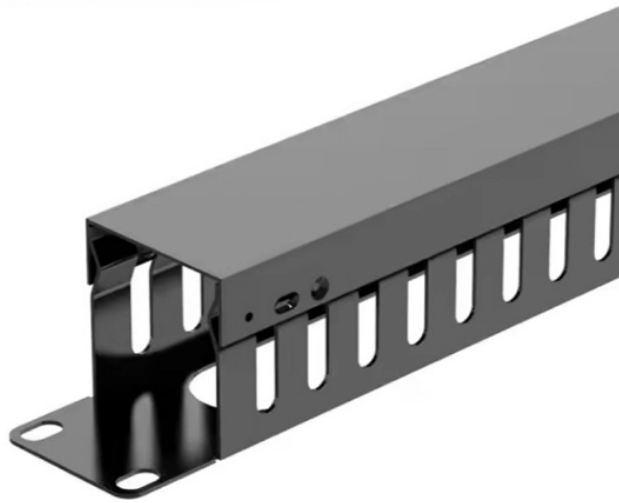


# Mali tariff cost optical transmitter 1G



## Overview

For a \$10,000 shipment of Telecommunications Equipment from Mali, you can expect to pay approximately \$1,600.00 in total duties at the current rate of 16%. Additional fees include the Merchandise Processing Fee (MPF) and, for ocean shipments, the Harbor Maintenance Fee (HMF). Calculate import duties, fees, and total landed costs for goods from Mali to the USA (2026 January). Free calculator with profit margin analysis. The actual. As a member of the World Trade Organization (WTO) and the West African Economic and Monetary Union (WAEMU), Mali's tax policy distinguishes between intra-regional trade (characterized by preferential tariffs between regional partners) and extra-regional trade (subject to WAEMU's Common External. Each layer adds to the total cost — amounts based on customs value Based on a \$10,000 ocean shipment (FOB value) The tariff structure for telecommunications equipment follows the US stacking formula: the MFN base rate of 1%, plus Section 122 surcharge of 15%. The special tariff layer (the highest. Source of data: WTO IDB, UN Comtrade \* Ad valorem equivalents (AVEs) used Source of data: CTS \* Ad valorem equivalents (AVEs) used Loading. Find and discover HS classification, tariffs, taxes, controls, rulings, ECCNs, and default and

preferential duties for HS code 903149.

## Mali tariff cost optical transmitter 1G



Yes, Section 122 adds 15% to the tariff on Consumer Electronics from Mali. This surcharge was enacted on February 24, 2026 under Section 122 of the Trade Act and applies uniformly to imports from most ...



This rate combines multiple tariff layers including the MFN base rate and any applicable surcharges such as Section 122, Section 232, or Section 301 duties. Actual rates vary by product category and ...



Règles générales pour l'interprétation du Système harmonisé. SAMAKO II, Mali. © Copyright Douanes Maliennes, Tous droits réservés. 2022 .



Additional charges will be applied if the unit transmits in certain high tariff countries. Contact us for an up-to-date list of high-tariff countries if your bird may travel through these areas.



Yes, Section 122 adds 15% to the tariff on Telecommunications Equipment from Mali. This surcharge was enacted on February 24, 2026 under Section 122 of the Trade Act and applies uniformly to ...

