

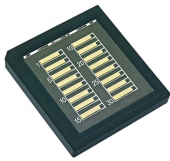
Manufacturer of Explosion-proof Distribution Boxes for Temperature Control Instruments



Manufacturer of Explosion-proof Distribution Boxes for Temperature



Minmile explosion-proof products prevent explosions at the source, making them suitable for military flammable and explosive environments.



Atex control stations, explosion protected control units and distribution boxes made stainless steel maritime grade AISI 316L or AISI 304L. Atex Delvalle provides a custom build facility for Hazardous ...



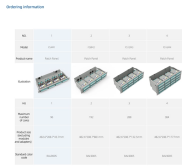
Dust Explosion-proof Power Distribution Panel MAMX-20 *In—built circuit breaker, AC Contactor, Thermorelay, PLC, Transducer, Soft starter and other components, The panel can install indicator, ...



Durable Hexlon Explosion Proof Distribution Boxes and Electrical Enclosures, IECEx and ATEX certified for Zone 1 and Zone 2.



Pepperl+Fuchs provides a specialized portfolio of Ex d (flameproof) and Ex tb (dust protection by enclosure) certified terminal boxes and junction boxes engineered for reliable use in explosion ...



Discover the top 10 explosion-proof industrial instrument enclosure manufacturers. Compare leading brands for hazardous area protection, certifications, and reliability.



We offer a complete range of products and systems using a variety of protection methods such as intrinsic safety, explosion proof, encapsulation, non incendive and purge and pressurization.



·Equipped with specialized hinge structure, which can prevent the flameproof joints from damage when opening and closing the box, and greatly prolong the service life of box. The boxes can be combined ...



The Explosion-proof Temperature Control Box MAMX-12-C2 is specifically made for safe and stable operation in explosion-prevailing hazard conditions. Made of heavy-duty aluminum alloy (ZL102) and ...

Contact Us

For more information, pricing, or custom energy solutions, please contact us:

Website: <https://gdroofing.co.za>

Email: sales@gdroofing.co.za

Phone: +27 72 418 9365

Address: 22 Electron Avenue, Isando, Johannesburg, 1600, South Africa

This document is for informational purposes only. Specifications subject to change without notice.

