

Measuring Angles for Cable Trays



Measuring Angles for Cable Trays



The load capacity of the cable trays according to the support width can be read off in the diagram using load curves - here, shown as an example for a cable tray with the tray widths 100 to 600 mm.



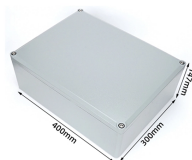
Some applications may require the cable tray to support the weight of a single, dead object in addition to the cable loads. Specifications typically require this to be applied at the midpoint of the span between ...



Cable tray length is selected based on the load to be supported, the distance between the supports (also referred to as the span), and handling and installation constraints.



For ladder or ventilated trough trays, the total sum of the cross-sectional areas of all the cables to be installed in the cable tray must be equal to or less than the allowable cable area for the tray width, as ...



By applying the following formula you can quickly find the size of the cut-out section that you need to cut out of the side of the cable tray, or gutter-type section to make that angle.



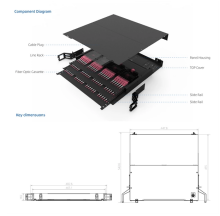
Cable tray size calculation is important for ensuring safe cable installation, proper heat dissipation, and enough spare capacity for future expansion. In this guide, you will learn how to ...



Explore standard sizes by tray type, understand width and depth limits, and see how to calculate and choose compliant cable tray sizes for real projects.



RUNG SPACING: The distance measured from center of rung to center of adjacent rung. Standard rung spacing is ventilated (maximum opening of 52 mm), 150 mm, 225 mm, and 300 mm. The ...



Cable Tray Bend Offset Calculator Calculate horizontal, vertical, or compound cable tray offsets based on bend angle, offset distance, and available installation space.



When fitting cable trays and their accessories, the products are cut on site to create changes of direction, adjust sections, etc. Damage can also occur during handling; as a result, both the ...



Explore standard sizes by tray type, understand width and depth limits, and see how to calculate and choose compliant cable tray sizes for real projects.

Contact Us

For more information, pricing, or custom energy solutions, please contact us:

Website: <https://gdroofing.co.za>

Email: sales@gdroofing.co.za

Phone: +27 72 418 9365

Address: 22 Electron Avenue, Isando, Johannesburg, 1600, South Africa

This document is for informational purposes only. Specifications subject to change without notice.

