

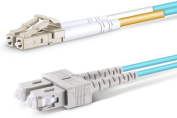
Metal-Rugged Fiber Optic Sensor

Ordering information

NO.	1	2	3	4	5	6
Model	SPF12M1	SPF24M2	SPF48M4	SPF6M1	SPF12M2	SPF24M4
Product name	Patch Panel	Patch Panel	Patch Panel	Patch Panel	Patch Panel	Patch Panel
Illustration						
HU	1	2	4	1	2	4
Maximum number of cores	144	288	576	144	288	576
Product size (excluding modules and adapters)	482.6*371.1*44 mm	482.6*371.1*88.1 mm	482.6*371.1*177 mm	482.6*371.1*44 mm	482.6*371.1*88.1 mm	482.6*371.1*177 mm
Standard color code	RAL9005	RAL9005	RAL9005	RAL9005	RAL9005	RAL9005



Metal-Rugged Fiber Optic Sensor



This makes heavy duty fiber optic sensors uniquely suited for environments near high-voltage equipment, powerful motors, or welding operations where traditional electronic sensors ...



Sensuron Optical Fiber Sensors Overview
Sensuron's Optical Fiber Sensors enable engineers to collect and analyze material and structural data based on minute changes in tens of thousands of points of ...



Rugged Monitoring's GaAs fiber optic sensors are easy to install and are based on proven zero-drift GaAs technology. They are designed to surpass transformer lifespan. This makes them highly ...



This work reports on the design of an optical fiber-pressure sensor system based on low-coherence interferometry that uses a metal-embedded optical fiber to provide a robust sensor package.



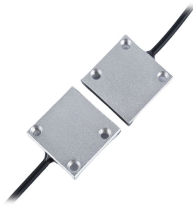
From high-quality fiber-optic amplifiers to rugged optical fiber cables and matching accessories. In combination, these perfectly matched components enable high efficiency and precision in demanding ...



Completely sealed in the most resistant alloy such as stainless steel, Inconel, or Incoloy, the combination of sensor and cable is precisely designed to work in adverse conditions of temperature, ...



temperature sensitive components into the 3D metal part. Fiber optic strain sensors are particularly vulnerable due to their temperature sensitive inscriptions, commercially common plastic coatings, ...



EMBOSS Cables are designed for reliable fiber optic sensing in demanding conditions. With rugged embossed sheaths, dual singlemode fibers, and high tensile strength, they ensure strong adhesion ...



Pepperl+Fuchs" fiber optic sensors offer an ideal solution for detecting small targets under challenging conditions. These sensors and cables can be employed in spaces too small for conventional ...



Learn all about various sensors—including fiber optic sensors, photoelectric sensors, laser sensors, and contact sensors—with detailed information on measurement principles and applications.

Contact Us

For more information, pricing, or custom energy solutions, please contact us:

Website: <https://gdroofing.co.za>

Email: sales@gdroofing.co.za

Phone: +27 72 418 9365

Address: 22 Electron Avenue, Isando, Johannesburg, 1600, South Africa

This document is for informational purposes only. Specifications subject to change without notice.

