

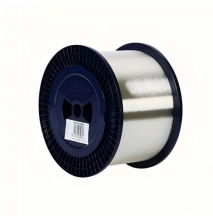
Method for Assembling Electricity Meters in Distribution Boxes



Method for Assembling Electricity Meters in Distribution Boxes



Ganged meters installed in meter rooms shall be mounted so that the center of the meter shall be not more than 72 inches and not less than 42 inches above floor level.



Method One: Electrical contractor will furnish DTE approved standard single meter enclosures, which the electrical contractor will install using trough, conduit or other suitable means.



Learn how to wire an electric meter box with a detailed wiring diagram. Follow step-by-step instructions to ensure a safe and efficient installation.



The guidelines are intended to standardize the process for assessing and completing energy meter installation requests according to ADDC's targets ...



Step-by-step guide to safe electric meter box installation, from code checks to tools, mounting and wiring.



Step-by-step guidance on installing an electric meter box safely—site prep, clearances, mounting height, wiring, grounding, permits, and code compliance explained.



Step-by-step guide to installing an electric meter box. Learn safety tips, wiring steps, troubleshooting, and when to call a pro.



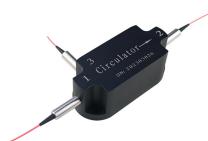
The service entrance will be so arranged that the Company can measure the Customer's entire electric service with one meter, unless otherwise specified in the Company's rate tariff schedule.



Explore a comprehensive guide to residential electric meter box wiring diagrams, offering clear instructions for safe and efficient installation.



Through the above steps, the assembly of the distribution box with an electricity meter that complies with the CE standard can be completed, ensuring safety, compliance, and easy ...



Clear wiring diagram for residential electric meter box, showing connections, safety components, and layout for accurate installation and maintenance.

Contact Us

For more information, pricing, or custom energy solutions, please contact us:

Website: <https://gdroofing.co.za>

Email: sales@gdroofing.co.za

Phone: +27 72 418 9365

Address: 22 Electron Avenue, Isando, Johannesburg, 1600, South Africa

This document is for informational purposes only. Specifications subject to change without notice.

