

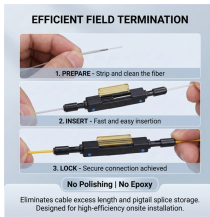
## Method for fabricating cable tray shaft supports



## Method for fabricating cable tray shaft supports



A cable tray roll former machine is a continuous metal forming system that produces cable trays from metal strips, typically in gauges ranging from 1.0mm to 3.0mm thickness. The machine ...



In designing supports for a cable tray system, consideration should be given to the loads associated with future cable additions and any additional loading that may be applied to the cable tray system (e.g., ...



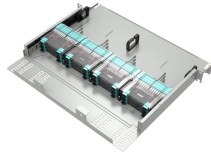
Some applications may require the cable tray to support the weight of a single, dead object in addition to the cable loads. Specifications typically require this to be applied at the midpoint of the span between ...



To install the cable tray supports, first find the required elevation from the floor to the bottom of the cable tray and establish a level line with a laser or a nylon string.



Our wind certification report provides you with list of acceptable B-Line series cable tray supports, fittings and covers based off of the environmental conditions, cable loading, and type of cable tray in your ...



The load capacity of the cable trays according to the support width can be read off in the diagram using load curves - here, shown as an example for a cable tray with the tray widths 100 to 600 mm.



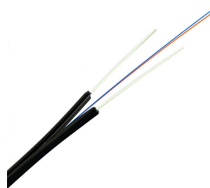
The document outlines procedures for cable tray fabrication and installation for the HA MBD project. It includes sections on scope of work, reference documents, required materials and equipment, safety ...



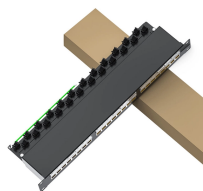
The purpose of this article is to define the sequence and methodology for the installation of electrical cable trays, cable trunking, cable raceways and boxes, ...



The basic stress allowables for cable tray supports utilizing rolled structural shapes are in accordance with ANSI/AISC N-690 and the supplemental requirements described in subsection 3.8.4.5.2.



Discover the detailed process on how to produce cable trays, covering everything from material selection to assembly and surface treatment. Learn key techniques for efficient cable tray ...



NEMA VE 1-2017 Specifies requirements for metal cable trays and associated fittings designed for use in accordance with the rules of Canadian Electrical Code, Part I and the National Electrical Code®



This guide will discuss the process of cable tray fabrication and installation, and further highlight the considerations of using a GI cable tray for various applications.

## Contact Us

For more information, pricing, or custom energy solutions, please contact us:

Website: <https://gdroofing.co.za>

Email: [sales@gdroofing.co.za](mailto:sales@gdroofing.co.za)

Phone: +27 72 418 9365

Address: 22 Electron Avenue, Isando, Johannesburg, 1600, South Africa

This document is for informational purposes only. Specifications subject to change without notice.

