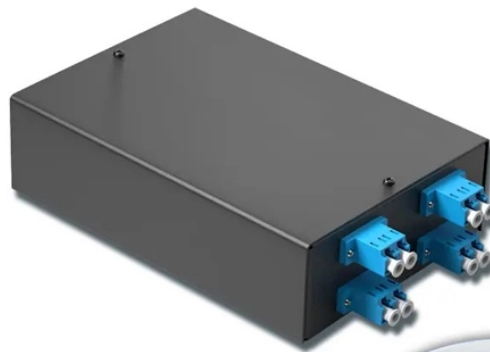


Micro-aisle cold aisle cabinets

4-port 8-core LC wall-mounted fiber terminal box (empty frame)

Surface painted Scientific plate fiber Cold-rolled steel plate



Lifetime quality assurance

Free shipping

Customizable for telecommunications



Micro-aisle cold aisle cabinets



Find out how to improve your data center infrastructure efficiency, using the cold aisle containment or hot aisle containment solutions from Vertiv.



Hot aisle and cold aisle containment are foundational concepts in data center design. When implemented correctly, they improve efficiency, reduce energy consumption, extend ...



Modular sliding or swinging door versions available with optional “soft” self-closing mechanisms and hold-open provisions. Accommodates aisle widths from 36” wide to 96” wide. Standard ...



Cold Aisle Containment for rack cabinets with single or double sliding doors and sliding roof frame units fabricated out of aluminium, with polycarbonate panel material and fire nozzle entry sections.



An aisle containment system is a simple way to improve cooling efficiency in hot aisle/cold aisle rack configurations. Essentially creating a room within the aisle, the system helps keep hot and cold air ...



Want an easy way to improve cooling efficiency in your data center or server room? Eaton's SmartRack Aisle Containment System is an easy-to-assemble structure designed to keep hot and cool air ...



AZE offers smart modular customizable hot and cold aisle containment solutions with 42U to 52U floor standing server rack enclosures. Save energy, reduce hotspots and improve airflow with data center ...



Cold aisle containment creates an enclosed corridor in front of server cabinets, ensuring that the coldest air goes directly into equipment intakes. By isolating the cold aisle, containment reduces unintended ...



Our aisle containment systems are vendor agnostic, featuring innovative, transparent panels that are lightweight and easily attached horizontally or vertically to cabinets using a universal rail system. ...



Integrated design of modular enclosed cold/hot compartments, with a closed cold aisle at the front and a closed hot aisle at the rear. Front single-opening tempered glass door (high transparency and ...

Contact Us

For more information, pricing, or custom energy solutions, please contact us:

Website: <https://gdroofing.co.za>

Email: sales@gdroofing.co.za

Phone: +27 72 418 9365

Address: 22 Electron Avenue, Isando, Johannesburg, 1600, South Africa

This document is for informational purposes only. Specifications subject to change without notice.

