

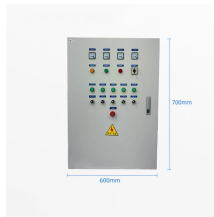
## Mongolian Suspended Platform Distribution Box



## Mongolian Suspended Platform Distribution Box



This control box features overload protection, emergency stop, phase loss protection, limit switch compatibility, and intuitive operation buttons, providing maximum safety and efficiency in high-altitude ...



Suspended platform is mainly composed by suspension mechanism, hoist, safety lock, electric control box, working platform. Its structure is reasonable and easy to operate. It can be make-up and break ...



The control box is a key component for the operation of the suspension platform, such as the electric suspension system. It is the central hub that controls the movement and function of the platform.



This control box features overload protection, emergency stop, ...



The Suspended Platform Electric Control Box is a vital component for the safe and efficient operation of gondola lifts and suspended access platforms. Designed to ensure centralized control, it integrates ...



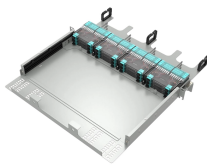
The video is about go higher electric control box for gondola suspended platform.



outdoor electrical distribution box size electric control box for suspended working platform gondola 10m 800kg suspended scaffolding systems aluminum alloy with lifting height 300m



Discover high-quality electric suspended platforms and hoists designed for construction sites. Improve safety, efficiency, and project timelines with our durable solutions.



Suspended platform is an aerial work equipment, usually composed of metal frames, safety locks, steel wire ropes, electric control boxes and other components.



We are a Professional Electric Aluminum Suspended Working Platform in Mongolia Manufacturer Who is Specialized in Suspended Platform, Suspended Platform Accessories.



Tianjin Qingfengshun is renowned for its advanced and reliable aerial work platforms. Our suspended platforms and BMUs are designed for safety, low maintenance cost, and high efficiency, providing ...

## Contact Us

For more information, pricing, or custom energy solutions, please contact us:

Website: <https://gdroofing.co.za>

Email: [sales@gdroofing.co.za](mailto:sales@gdroofing.co.za)

Phone: +27 72 418 9365

Address: 22 Electron Avenue, Isando, Johannesburg, 1600, South Africa

This document is for informational purposes only. Specifications subject to change without notice.

