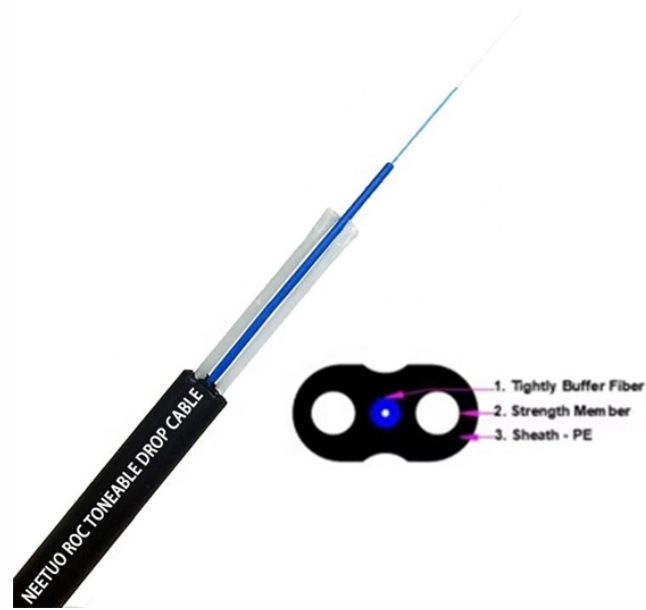


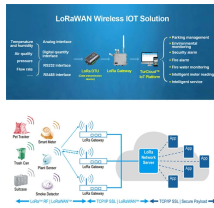
Mountable base for secondary distribution box



Mountable base for secondary distribution box



Choose from our selection of electrical box brackets, including mounting adapters, mounting brackets, and more. Same and Next Day Delivery.



Hubbell fiberglass pedestals provide a secure, maintenance free enclosure for secondary connections. Pedestals are available to accommodate floating connectors and have an optional high back design ...



Easy Installation of outgoings The design of the pan assembly facilitates the installation of outgoing devices. Availability of mixing Mixing two different types of outgoing devices can be provided in ...



From floor-mount to wall-mount box supports, we offer a variety of options to mount just one or up to 5 boxes. Find out how to save on installation time.



Discover the robust selection of secondary pedestals at Hubbell, designed to enhance and secure your power distribution needs. These secondary pedestals are built to withstand harsh environments, ...



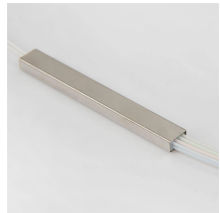
This document provides specifications, ordering information, illustrations, and application instructions for the various sizes of non-concrete and precast concrete enclosures used in PG& E electric ...



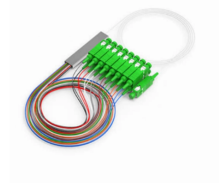
The current sensors are inductive current transformers whose secondary winding delivers a voltage signal through a precision shunt. At the rated primary current, this is 225 mV.



Description Lightweight and durable pedestal with ribbing to ensure in-ground stability. Increased material wall thickness in stress areas for impact and crack resistance. Wide base for greater in ...



RSP Supply offers a full selection of enclosure pedestals and bases designed to support proper mounting height, cable routing, and long-term durability in industrial and commercial environments.



Secondary Connection Pedestals URD URD Single & Three Phase | 600 VAC Note: To convert 1000341 to direct burial order ground sleeve catalog #1000366.

Contact Us

For more information, pricing, or custom energy solutions, please contact us:

Website: <https://gdroofing.co.za>

Email: sales@gdroofing.co.za

Phone: +27 72 418 9365

Address: 22 Electron Avenue, Isando, Johannesburg, 1600, South Africa

This document is for informational purposes only. Specifications subject to change without notice.

