

Namibia CE Certified QSFP Optical Module QSFP28



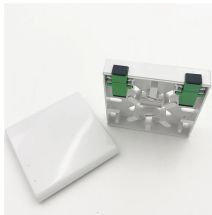
Namibia CE Certified QSFP Optical Module QSFP28



The 100G QSFP28 module solution provides high-performance 100GbE connectivity for data centres, enterprise core & distribution layers, computing networks and ...



The Cisco QSFP28 to SFP28 Adapter (QSA) Module offers 25, 10 and 1 Gigabit Ethernet Connectivity for QSFP 100G ports. The adapter gives customers flexibility to upgrade to 100GE ...



The QSFP28 module provides 100GBase-LR4 throughput up to 10km over a standard pair of single-mode fiber (SMF) with duplex LC connectors. This transceiver is compliant with IEEE 802.3ba ...



This article explores how to interconnect OSFP and QSFP-DD ports in 400G/800G networks, covering key principles, form factor differences, and practical solutions for stable, high-speed data center ...



Extend your network up to 80km with our QSFP28 modules.



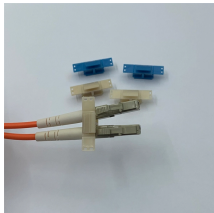
QSFP28 100G 850nm 1310nm 100m 10km 40km 80km 100km SR4 LR4 ER4 ZR4 MPO LC Optical Transceiver SFP Module Compatible QSFP28 100G No reviews yet Shenzhen Pacific Technology ...



Through our advanced, high-performance, and highly reliable optical device technologies and products, we are shaping and supporting the networks of the future. NEC has been developing and ...



The 100G QSFP28 module solution provides high-performance 100GbE connectivity for data centres, enterprise core & distribution layers, computing networks and service provider applications.



100Gbps QSFP28 Optical Modules QSFP-100G-CWDM4 QSFP28-100G-LR4 QSFP28-100G-SR4 QSFP-100G-4WDM-40 QSFP-100G-CWDM4-ISP QSFP-100G-CWDM4-Lite QSFP-100G-ER4 ...



Our QSFP28-SR Multi-Mode-Fiber (MMF) Optical Modules integrate a 12-lane MTP/MPO fiber receptacle (port) for 100G Ethernet links using industry-standard MTP/MPO fiber patch cords up to ...



Engineered with advanced features, this module is specifically designed for long-range data transmission, making it well-suited for applications requiring extended reach and dependable ...

Contact Us

For more information, pricing, or custom energy solutions, please contact us:

Website: <https://gdroofing.co.za>

Email: sales@gdroofing.co.za

Phone: +27 72 418 9365

Address: 22 Electron Avenue, Isando, Johannesburg, 1600, South Africa

This document is for informational purposes only. Specifications subject to change without notice.

