

No response when plugged into the S port of the core switch



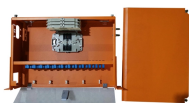
Overview

Make sure that both ends of the cable are plugged into the correct ports. Refer to the Catalyst Switch Cable Guide. In this article, you will learn how to use some of the most common network hardware diagnostics tools to troubleshoot switch port connectivity issues. If using Power over Ethernet (PoE), verify the PoE injector or power budget. AS5835-54T Step-1 Please make sure your network cable is good first Step-2 Please power cycle the switch and boot into the ACCTON-DIAG for troubleshooting Step-3 Enter the command to. You can use the show controllers command to see if there's something physically wrong with it, or try a different port on the switch to see if the same problem is happening.

No response when plugged into the S port of the core switch



Learn how to use network hardware diagnostics tools like ping, cable tester, port scanner, switch configuration, SNMP, and syslog to troubleshoot and fix switch port connectivity issues.



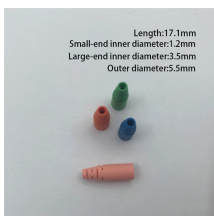
A brief overview of basic troubleshooting steps across all Dell switch platforms for a switch that appears to be unresponsive.



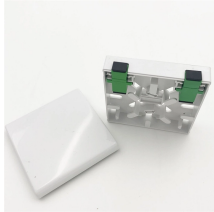
Previously we had seen low RX power (-23.5dBm) on the core switch SFP port. Ended up testing the entire run and replaced all SFPs and cables, which we though fixed it when the power went up to ...



A comprehensive switch troubleshooting from the physical layer to the data link layer to the network layer to find out why your network switch is not working.



Make sure there are no firewalls that could be blocking the switch's management traffic. Plug the switch's uplink cable into another device like a laptop, to test for Internet connectivity. Try performing ...



Prerequisites
 Troubleshoot The Physical Layer
 Troubleshoot The Most Common Port and Interface Commands For Cisco iOS
 Understand The Specific Port and Interface Counter Output For Cisco iOS
 Common System Error Messages
 Common Port and Interface Problems
 Related Information
 This table shows the most common commands used to troubleshoot the port or interface problems on switches that run Cisco IOS System Software on the Supervisor.
 Note: The right hand column on the next table gives a brief description of what the command does and lists any exceptions to the use per platform. If you have the output of the supported com...
 See more on cisco
 Published: Nov 3, 2023
 LinkedIn



Whether using a managed or unmanaged switch, diagnosing and fixing switch failures requires a structured approach. This guide will help you troubleshoot and resolve network switch failures, ...



This is because the switch does not know that the connected device is a PC; the switch only knows that the port has changed the state. In order to resolve this issue, Cisco has developed ...



Troubleshooting a switching network is not an exact science; rather it is an art form. You tend to have to have an intuition of which part of the network might be having a problem. Here are some general ...



Purpose : This article describes how to check the hardware portion for troubleshooting switch ports cannot link up problems. Model : ...



You can use the show controllers command to see if there's something physically wrong with it, or try a different port on the switch to see if the same problem is happening.

Contact Us

For more information, pricing, or custom energy solutions, please contact us:

Website: <https://gdroofing.co.za>

Email: sales@gdroofing.co.za

Phone: +27 72 418 9365

Address: 22 Electron Avenue, Isando, Johannesburg, 1600, South Africa

This document is for informational purposes only. Specifications subject to change without notice.

