

# **OPGW Fiber Optic Cable Connector Junction Box**



## OPGW Fiber Optic Cable Connector Junction Box



Product structure features: Optical cable joints and excess length are stored in sheets, and the joint protection is reinforced with heat shrinkable sleeves. The joint box is sealed with steel belt and ...



OPGW Junction box is mainly used for protecting the fiber optic junction between two cables and reserve a section of fiber optic for maintenance in the box. The box has good leakproofness, anti ...



Learn the essential steps for installing an OPGW cable joint box, including preparation, mounting, fiber splicing, and sealing techniques, to ensure reliable and secure fiber optic connections ...



To prove you're not a bot, solve this simple math problem. The machine translated document is now available for download.



Our RIBE-OPTOFIT® accessories offer the ideal solution for connecting fiber optic overhead cables and terminating the optical signal, and perfectly complement proven RIBE-OPTOFIT® fittings.



The ADSS/OPGW Metal Junction Box is designed to protect and manage fiber optic cable splices in outdoor power and communication networks. It securely houses fiber core splices connecting trunk ...



The ADSS/OPGW metal junction box is also called a splicing box that is designed to house the fiber core splices to the outdoor intermediate optical cable leading to the patch panel in the control room.



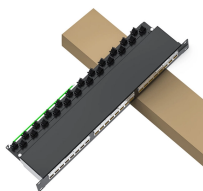
OPGW splice box provides essential features such as protection, sealing, compatibility, durability, easy access, temperature resistance, and modularity to ensure the reliability and longevity of OPGW cable ...



Furnished with four plugged cable ports (2 aluminum and 2 plastic) for either All-Dielectric Self-Supporting (ADSS) or Optical Ground Wire (OPGW) cables, the splice enclosure can be pre ...



ADSS/OPGW Metal Junction Box The ADSS/OPGW Metal Junction Box, also known as a splicing box or Metal Joint Junction Box, is designed to house fiber core splices for outdoor intermediate optical ...



The ADSS/OPGW metal junction box is also called a splicing box ...

## Contact Us

For more information, pricing, or custom energy solutions, please contact us:

Website: <https://gdroofing.co.za>

Email: [sales@gdroofing.co.za](mailto:sales@gdroofing.co.za)

Phone: +27 72 418 9365

Address: 22 Electron Avenue, Isando, Johannesburg, 1600, South Africa

This document is for informational purposes only. Specifications subject to change without notice.

