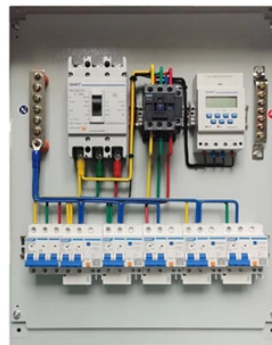


Optical Distribution Box PG01



Optical Distribution Box PG01



Whether it will be used as splice storage or as distributor housing, there is enough space in the rugged plastic ODB 54 housing for accommodating up to 24 glass fiber ports.



This 16 Ports Pre-Connectorized Optical Fiber Distribution Box is the ideal HUB solution for modern FTTx, ODN, and pre-connectorized network architectures, providing efficient fiber management, fast ...



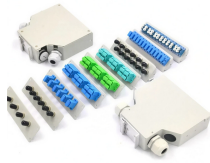
Fiber distribution box is suitable for the wiring connection of optical cable and optical communication equipment, through the adapter in the wiring box, the optical jumper leads the optical signal, and ...



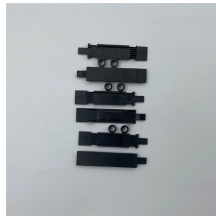
It provides a secure point for splicing, branching, distributing, straight-through, or fiber optic termination, preventing environmental hazards such as dust, moisture, water, or UV rays when used outdoors.



It is designed to serve as a building entry point for FTTH applications but is also a perfect choice for all types of FTTx applications. The optical distribution box provides versatility, enabling fusion splicing, ...



Fiber distribution box is made of high-strength engineering plastics, anti-UV, anti-aging ability. The distribution box is sealed adopts buckle + two screw type ...



Application Description: Optical Distribution Point ODP Box provides a connection point between distribution cables and drop cables at the subscriber access point in fiber optic network.



Explore reliable FTTH terminal boxes for secure fiber termination and distribution. ...



Pre-connectorized optical distribution box (ODN) GP31-2P18PC Overview This plug-and-play setup allows technicians to complete network connections efficiently by inserting and locking cables on ...



LongXing's fiber optics distribution box GP31-1P01A is suitable for separating indoor and outdoor equipment in an optical fiber communication system. It can be used for connecting various optical ...



Explore reliable FTTH terminal boxes for secure fiber termination and distribution. Wall-mounted design, robust build, for home and industrial optical networks.

Contact Us

For more information, pricing, or custom energy solutions, please contact us:

Website: <https://gdroofing.co.za>

Email: sales@gdroofing.co.za

Phone: +27 72 418 9365

Address: 22 Electron Avenue, Isando, Johannesburg, 1600, South Africa

This document is for informational purposes only. Specifications subject to change without notice.

