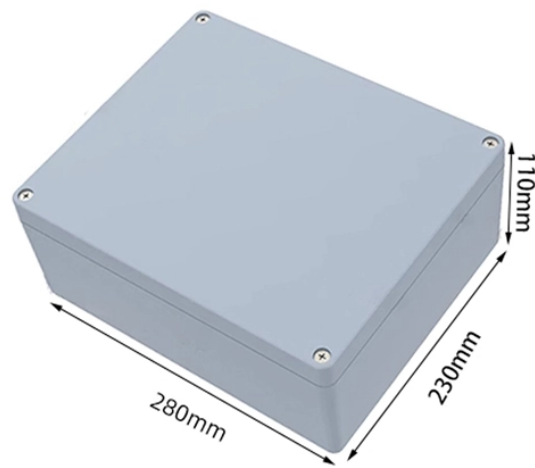


Optical Module DDM Splitter



Optical Module DDM Splitter



Discover a complete line of optical splitter components, ideal for advanced network designs.



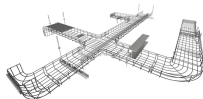
The DWDM coupler has the same coupling ratio on both 1310 nm and 1550 nm communication windows, and with low excess loss and low PDL. DWDM couplers are widely used for communication systems, ...



CommScope offers a portfolio of bare and connectorized splitters/couplers in a wide range of styles and split ratios, and splitter modules for inside plant (ISP) and outside plant (OSP) applications that help ...



Supporting QSFP+, QSFP28 and QSFP-DD optical modules with breakout capabilities on Nokia platforms, the modular solution offers operators the flexibility to mix and match connector breakout ...



Clearfield leads the way with optical component technologies for PON splitting, C/W division multiplexing and optical circulators. These products are custom built to your unique split ratios, light requirements ...



LGX Coupler, Splitter and WDM modules in both standard and high-density formats for passive optical TAP, FTTx, PON, and CEx applications.



Teleste's high-density optical platform offers extensive active and passive functionality in a small form factor, either in HDO format or in standalone 19-inch housings. The splitter and filters can deploy all ...



Splitter needs to be used together with BIDI OLP to provide line protection for single fiber bidirectional transmission. The working mode of BIDI is dual transmitting and selective receiving. Optical line ...



Wavelength division multiplexer units for WDM, CWDM or DWDM applications. We also can customize our equipment for use with these optics. Managed Fiber Optic Optical Switch for System ...



They can be housed on the Amphenol Network Solutions C2X, C2E fiber distribution panel, or the LGX standard enclosure, where a market-leading number of splitters can be loaded onto 1RU, 2RU, 3RU, ...

Contact Us

For more information, pricing, or custom energy solutions, please contact us:

Website: <https://gdroofing.co.za>

Email: sales@gdroofing.co.za

Phone: +27 72 418 9365

Address: 22 Electron Avenue, Isando, Johannesburg, 1600, South Africa

This document is for informational purposes only. Specifications subject to change without notice.

