

## Optical Module Photoelectric Conversion Device



## Optical Module Photoelectric Conversion Device



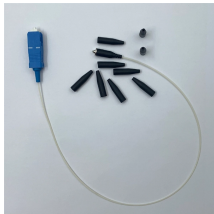
Embodiments of the present application provide an optical module single board and a photoelectric conversion device.



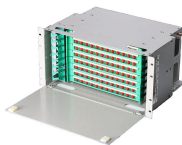
Capable of transmitting 100G 25Gbps×4 channels, LIGHTPASS®-EOB 100G is a low 2.3 mm height, MPU integrated active optical module.



The waveguide detector (402) comprises a waveguide layer (20) and a photoelectric conversion layer (40) in contact with and stacked with the waveguide layer (20).



Among these devices, the 100 mA optoelectronic conversion chip module is commonly used in high-speed optical receiver circuits. It efficiently converts optical signals into electrical signals ...



800G Transceiver acts as a vital photoelectric conversion node for data transmission, enabling efficient and reliable communication. This article will ...



Herein, we present a versatile simulation framework for photovoltaic (PV) devices.



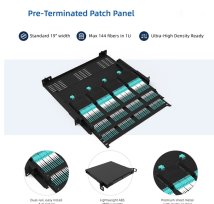
Devices such as these currently use optical transmission to send signals outside at high speeds, perform photoelectric conversion using external ...



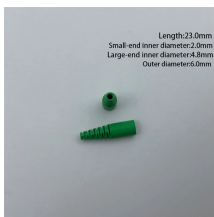
An optical transceiver module is a photoelectric conversion accessory and one of the key devices in the field of optical communication transmission. It is composed of optoelectronic devices, ...



Devices such as these currently use optical transmission to send signals outside at high speeds, perform photoelectric conversion using external modules, and are used to transmit electricity ...



Embodiments of the present application provide an optical module single board and a photoelectric conversion device.



In this paper, we introduced an ultra-compact photoelectric converter array module fabricated with hybrid-integration microassembly process, the practical test results showed a good optical coupling ...



The main function of the optical transceiver module is photoelectric conversion, realizing optical power control, modulation, transmission, signal detection, etc. Common types are SFP, SFP+, SFP28, ...

## Contact Us

For more information, pricing, or custom energy solutions, please contact us:

Website: <https://gdroofing.co.za>

Email: [sales@gdroofing.co.za](mailto:sales@gdroofing.co.za)

Phone: +27 72 418 9365

Address: 22 Electron Avenue, Isando, Johannesburg, 1600, South Africa

This document is for informational purposes only. Specifications subject to change without notice.

