

Optical Power Meter Accessories SC Small Square Head



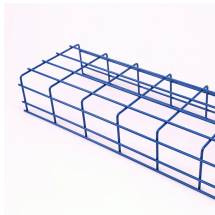
Optical Power Meter Accessories SC Small Square Head



Buy Optical Fiber Connector SC/ST/ FC Optical Power Meter Conversion Adapter Coupler Flange Red pen Metal Accessories Factory outlet at Aliexpress for . Find more, and products. Enjoy Free ...



FPM-50A - Fiber Optic Power Meter (-50 to +26 dBm) with FC:SC:LC Adapters - Data Sheet
FPL-5050 Fiber Power Meter & Optical Light Source Kit (-50 to +26 dBm, single-mode)



AFL Optical Fiber Identifier Adapter OFI-BIPM SC Power Meter Port \$166.00 SKU BIPM00SC



Available Wavelength: 800~1700nm. Standard Wavelength: 850/ 1300/ 1310/ 1490/ 1550/ 1625nm. 2.5mm universal optical interface (FC, SC, ST are supported). Optical Connector: ...



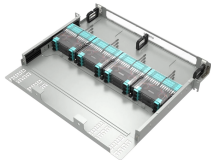
These SC square adapters were designed with speed in mind, and are ...



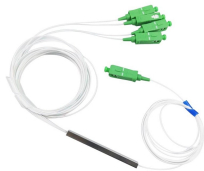
To add the following enhancements to your purchase, choose a different seller. We offer easy, convenient returns with at least one free return option: no shipping charges. All returns must comply ...



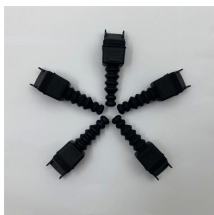
Insert the ferrule (2.5 mm) in the universal fiber connector port and obtain accurate optical power reading. This universal adapter cap fits all current models of OWL optical power meters. It reduces ...



Jonard | sku: JON00054 Jonard Mini Optical Power Meter, (-50 to +26dBm) - FPM-50S MSRP:



SC Adapter, M16 Thread, Applicable For Test Head Conversion of Power Meter or Light Source.



Insert the ferrule (2.5 mm) in the universal fiber connector port and obtain accurate optical power reading. This universal adapter cap fits all current models of OWL ...



These SC square adapters were designed with speed in mind, and are traditionally used for power-meter hookups, temporary repairs, or quick fiber connections. These come with a low insertion loss ...

	<p>AFL Optical Fiber Identifier Adapter OFI-BIPM SC Power Meter Port \$166.00 SKU BIPM00SC</p>
	<p>FPM-50A - Fiber Optic Power Meter (-50 to +26 dBm) with FC:SC:LC Adapters - ...</p>
	<p>Simply strip, clean and cleave your fiber and insert it into the bare fiber adaptor, you may easily connect and couple bare fibers with other optical devices. They are ideal for power meter connections, ...</p>

Contact Us

For more information, pricing, or custom energy solutions, please contact us:

Website: <https://gdroofing.co.za>

Email: sales@gdroofing.co.za

Phone: +27 72 418 9365

Address: 22 Electron Avenue, Isando, Johannesburg, 1600, South Africa

This document is for informational purposes only. Specifications subject to change without notice.

