

## Optical module gigabit network port



## Optical module gigabit network port



Multimode and single-mode fiber Gigabit Ethernet, Fast Ethernet, Fiber channel, ...



Many, although not all, 10G SFP+ ports have support to use a 1G SFP transceiver (or even a 100Mbps FX SFP transceiver). See the QuickSpecs for the Switch product and verify if the 1G or 100Mbps ...



This data sheet describes the benefits, specifications, and ordering information for the Cisco SFP Modules for Gigabit Ethernet Applications.



FS 10GbE SFP+ module solutions provide a wide variety of 10 Gigabit Ethernet connectivity options for data centers, enterprise wiring closets, Internet Service Providers (ISPs) applications.



This guide focuses on what a gigabit SFP module is, how it works, the main types available, and how to choose the right one for your network.



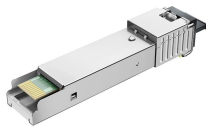
The original SFP optical module primarily supports data rates up to 1.25 Gbps for Gigabit Ethernet and Fibre Channel applications. These transceivers remain widely used for access layer ...



The new Intellinet Network Solutions Small Form Factor Pluggable (SFP) Transceiver provides the best combination of performance and affordability. This mini-GBIC (Gigabit Interface Converter) module ...



The Intellinet 10 Gigabit Fiber SFP Optical Transceiver Module (model 507479) is fully hot-pluggable, and that allows you to install the module without rebooting your network switch for ...



Multimode and single-mode fiber Gigabit Ethernet, Fast Ethernet, Fiber channel, ATM/SONET, SDH Hot-pluggable with durable metal enclosure Can be installed in any Cisco or MSA SFF-8472 ...



The SFP (Small Formfactor Pluggable) gigabit optical module is a critical component in optical communication systems, used to achieve optical-to-electrical conversion.



The Intellinet 10 Gigabit Fiber SFP Optical Transceiver Module ...



The industry-standard Cisco® Small Form-Factor Pluggable (SFP) Gigabit Interface Converter (Figure 1) links your switches and routers to the network. The hot-swappable input/output device plugs into a ...

## Contact Us

For more information, pricing, or custom energy solutions, please contact us:

Website: <https://gdroofing.co.za>

Email: [sales@gdroofing.co.za](mailto:sales@gdroofing.co.za)

Phone: +27 72 418 9365

Address: 22 Electron Avenue, Isando, Johannesburg, 1600, South Africa

This document is for informational purposes only. Specifications subject to change without notice.

