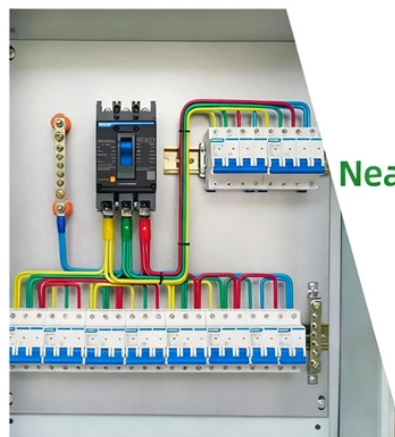


# Optimizing the Structure of the Energy Internet

## DETAILS DISPLAY



Focus On Every Detail



01

Neat & Clean  
Layout



Cleaner arrangement  
of components,  
Easy to operate

## Overview

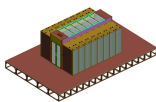
As a solution, this study proposed an optimized approach based on the concept of layered control-collaborate optimization. The proposed method allows the distributed device to plan the heat, cold, gas, and electricity in the regional system in the most efficient way possible. Its features, such as plug-and-play mechanism, real-time bidirectional flow of energy, information, and money can lead to significant benefits and innovation in electricity production and. LPWA is an Internet of Energy (IoE) structure that can provide a comprehensive stream of energy sector applications. The IoE with intelligent computing tools can dramatically enhance energy efficiency, improve and sustain renewable energy, and diminish energy contamination's ecological effects. The old economic and social growth model, characterized by centralized fossil energy consumption, is progressively shifting, and the third industrial revolution, represented by new energy and Internet technology, is gaining traction. Energy Internet, as a core technology of the third industrial. A scalable and reliable information and communication architecture is a crucial factor for both the operation and management of the energy Internet. We revisit some attempts to design a digital grid similar to the internet, including

packetized management of specific loads (electric vehicles.

## Optimizing the Structure of the Energy Internet



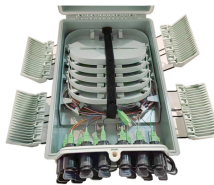
This study focused on the multilevel coordination and optimization approach of the energy Internet with renewable energy, and it developed a ...



Energy internet features are highlighted to enhance efficiency, security and reliability. Energy internet architectures and models are demonstrated for regulatory bodies. Challenges and ...



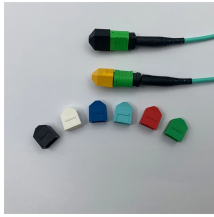
Internet of Energy is built on the principles of the Internet of Things to provide people with the data necessary to optimize and manage the power grid, with the goal to increase the autonomous ...



Given this, an attempt is made to develop the conceptual model of an Energy Internet, elaborate its structure and components, and discuss its operational principles.



Abstract—This paper focuses on the management of the electricity grids using energy packets to build the Energy Internet via machine-type communications.



This study focused on the multilevel coordination and optimization approach of the energy Internet with renewable energy, and it developed a hierarchical optimization scheduling model called ...



The benefits of the energy Internet, along with the challenges of its implementation on a large-scale distributed architecture with the inclusion of renewable energy resources, is discussed.



In addition to stability-oriented control and management strategies, there are also many works that aim to optimize energy use by minimizing costs or maximizing benefits, extending the life ...



Design of energy resources, transmission, distribution, and consumption in network architecture is becoming a challenging energy optimization issue. The demand for power analysis ...



In addition to stability-oriented control and management strategies, there are also many works that aim to optimize energy use by minimizing costs or ...



This paper analyzes the resource allocation effect of the Energy Internet through four theoretical analysis frameworks: Cournot model, time and space heterogeneity, information ...



In order to reduce the complexity of centralized optimal dispatch on large-scale systems and protect the information privacy of different EHs, a hierarchical optimization strategy is put forward ...

## Contact Us

For more information, pricing, or custom energy solutions, please contact us:

Website: <https://gdroofing.co.za>

Email: [sales@gdroofing.co.za](mailto:sales@gdroofing.co.za)

Phone: +27 72 418 9365

Address: 22 Electron Avenue, Isando, Johannesburg, 1600, South Africa

This document is for informational purposes only. Specifications subject to change without notice.

