

Outdoor single-phase grounding of distribution box



Outdoor single-phase grounding of distribution box



These instructions define the areas in which assistance may be given to a primary customer to coordinate the customer's and DTE Electric systems, to increase the operating safety of high voltage ...



Whether you're a seasoned pro or just starting out, this comprehensive guide will give you practical insights into proper grounding techniques, with a special focus on how selecting quality materials ...



GE - PowerMark 125 AMP 4-Space 8-Circuit Outdoor Main Lug Load Center - Non-metallic box. Copper buss bar for excellent conductivity. Self-adjusting dead front cover for outdoor use. Single-phase, 125



Four-wire systems are superior to three-wire systems for serving single-phase loads and are predominant in North America. In addition to safety, it is cheaper to build the system because a ...



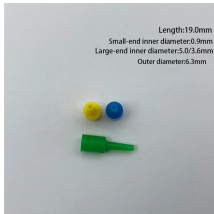
It is absolutely necessary to implement efficient grounding in distribution systems in order to guarantee the safety, dependability, and performance of the electrical network.



To equalize ground potential static wire ground leads, arrester ground leads, neutral ground leads and equipment case ground leads shall be bonded together with the only exceptions noted in the ...



In general, the solidly-grounded system is the most popular, is required where single-phase phase-to-neutral loads must be supplied, and has the most dependable phase-to-ground voltage characteristics.

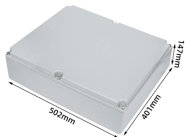


Length:19.0mm
Small-end inner diameter:0.9mm
Large-end inner diameter:0.12.6mm
Outer diameter:3mm

Grounding electrode conductors must be connected at accessible points from the load end of service conductors, with specific rules for outdoor transformers and dual-fed services.



Each Power Circuit Breaker or Power Transformer having a bushing Voltage Transformer on the tank shall have the Voltage Transformer provided with a separate ground lead, independent of the ...



GE - PowerMark 125 AMP 4-Space 8-Circuit Outdoor ...



This specification guide provides system designers, electrical engineers, and procurement professionals with the technical criteria needed to select compliant outdoor electrical ...

Contact Us

For more information, pricing, or custom energy solutions, please contact us:

Website: <https://gdroofing.co.za>

Email: sales@gdroofing.co.za

Phone: +27 72 418 9365

Address: 22 Electron Avenue, Isando, Johannesburg, 1600, South Africa

This document is for informational purposes only. Specifications subject to change without notice.

