

Paraguayan Active Optical Device LPO



Paraguayan Active Optical Device LPO



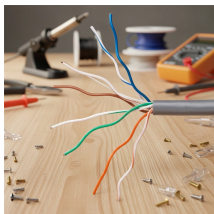
Semtech announced the demonstration of 100Gbps/lane linear pluggable optical links featuring Semtech's PAM4 PMDs from its FiberEdge ...



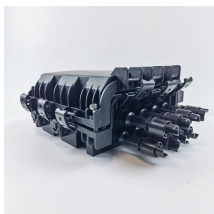
Develop primary LPO with connection distances from a few to tens of meters. In the future, it may be expanded to within 500 meters. Standardization has just begun. At present, the ...



Our LPO transceivers support 400G and 800G applications in QSFP and OSFP form factors. They bring all the efficiency and performance benefits of LPO to data center operators, while integrating ...



Target applications include low-cost, highly integrated devices for datacom optical transceivers, where a single POET optical engine performs all of the primary transceiver functions.



Industry Trends LPO as technology has seen considerable traction in the industry with several designs and solutions proposed over the years. OFC 2024 with 4 parallel channels. The system, as is ...



Semtech announced the demonstration of 100Gbps/lane linear pluggable optical links featuring Semtech's PAM4 PMDs from its FiberEdge product line and from its new DirectEdge brand, ...



While LPO is still in its nascent stage, the completion of the specification will have broad implications for the LPO MSA and the optical networking industry.



The focus of the LPO MSA is to specify module and network equipment level interoperability requirements that span both electrical and optical technologies. Starting at 100 Gb/s per lane, the ...



Customers have often singled out link accountability as a key impediment to adoption of LPO, and for good reasons



Although LPO saves less power than CPO, one advantage is that it provides better protection from thermal effects, which can cause optical signals to drift, than CPO does.



To reduce power consumption and cost while meeting the demands of high-speed, high-density optical communication connections, as well as the need for optical network flexibility and scalability, the ...

Contact Us

For more information, pricing, or custom energy solutions, please contact us:

Website: <https://gdroofing.co.za>

Email: sales@gdroofing.co.za

Phone: +27 72 418 9365

Address: 22 Electron Avenue, Isando, Johannesburg, 1600, South Africa

This document is for informational purposes only. Specifications subject to change without notice.

