

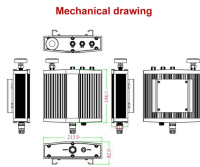
Parameters for selecting wall-mounted network cabinets



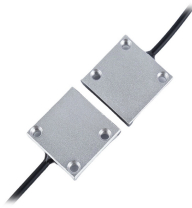
Parameters for selecting wall-mounted network cabinets



Learn how to select the right Network Cabinet size based on rack units, depth, airflow, and future expansion needs.



A practical, no-fluff guide to selecting the right wall mounted network cabinet—covering size, cooling, security, mounting, and real-world deployment considerations.



To maintain performance and protect your equipment, choose a vented wall-mount cabinet that supports proper network cabinet ventilation. Look for perforated front and side panels, ...



Wall-mounted network cabinets are ideal for small offices, surveillance systems, or areas with limited floor space. Floor-standing cabinets are better for larger setups that require more ...



High load rating - load ratings of up to 300lb capacity for select cabinets are suitable for IoT and PoE network applications. Low profile - available in 12" and 18" depths to provide equipment support in a ...



Below are the five essential things to check before buying — and why they matter. 1. Cabinet Depth & Device Clearance. Not all wall-mounted cabinets are created equal.



In this guide, we will cover essential aspects such as security and durability, the surrounding area, and the airflow of the equipment. We will also discuss the importance of the ...



To prepare your network cabinet for future AI workloads, start by choosing cabinets rated for at least 1500 kg static load. Next, install intelligent PDUs with per-outlet monitoring and smart power ...



Start by selecting a sturdy wall (concrete or solid wood is preferred over drywall alone) and use appropriate mounting hardware (expansion bolts or heavy-duty screws) to secure the cabinet.



Learn how to choose the right network cabinet, including size, security, ventilation, and cabinet styles such as wall-mounted and floor-standing options.

Contact Us

For more information, pricing, or custom energy solutions, please contact us:

Website: <https://gdroofing.co.za>

Email: sales@gdroofing.co.za

Phone: +27 72 418 9365

Address: 22 Electron Avenue, Isando, Johannesburg, 1600, South Africa

This document is for informational purposes only. Specifications subject to change without notice.

