

Polarization Maintaining Fiber

Polarization Maintaining Principle



Overview

In fiber optics, polarization-maintaining optical fiber (PMF or PM fiber) is a single-mode optical fiber in which linearly polarized light, if properly launched into the fiber, maintains a linear polarization during propagation, exiting the fiber in a specific linear polarization. In fiber optics, polarization-maintaining optical fiber (PMF or PM fiber) is a single-mode optical fiber in which linearly polarized light, if properly launched into the fiber, maintains a linear polarization during propagation, exiting the fiber in a specific linear polarization. In fiber optics, polarization-maintaining optical fiber (PMF or PM fiber) is a single-mode optical fiber in which linearly polarized light, if properly launched into the fiber, maintains a linear polarization during propagation, exiting the fiber in a specific linear polarization state; there is. □□ For purchasing, use the RP Photonics Buyer's Guide for polarization-maintaining fibers. It provides an expert-curated supplier directory, buyer-focused technical background information, and structured selection criteria to support professional procurement decisions. What are. During the drawing process of polarization-maintaining fiber, when linearly polarized light is transmitted along one characteristic axis of the optical fiber, part of the light signal will be

coupled into another characteristic axis perpendicular to it, which will eventually cause the polarization. Different types of polarization-maintaining fibers are designed depending on the geometry of the stress elements: "PANDA" fibers, "Bow-Tie" fibers or "Oval-Inner Clad" fibers. The polarization-maintaining fiber cables made by Schäfter+ Kirchhoff typically use fibers of type PANDA. The slow axis is. In this article, the latest in FOC's series covering specialty fibers and their fabrication, we discuss polarization-maintaining (PM) fibers and the various approaches used to make them. Polarization Maintaining (PM) Fibers are specialized optical fibers designed to preserve the polarization state of light as it travels through.

Polarization Maintaining Fiber Polarization Maintaining Principle



Polarization-Maintaining Optical Fiber (PMOF) is a specialized optical fiber that maintains the stable polarization state during optical transmission by enhancing birefringence.



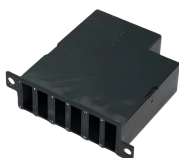
Polarization-maintaining fiber works by causing a difference in the speed of light in two perpendicular polarizations passing through the fiber. This birefringence produces two main ...



By using polarization maintaining optical fiber, the polarization characteristics of the light signal can be stabilized, improving the overall system performance and accuracy.



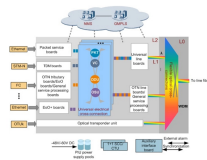
In polarization-maintaining single-mode fibers (PM fibers), the fiber symmetry is broken by integrating stress elements in the fiber cladding. The light is then guided in two perpendicular principle states of ...



Polarization-maintaining fibers work by intentionally introducing a systematic linear birefringence in the fiber, so that there are two well defined polarization modes which propagate along the fiber with very ...



Polarization maintaining fiber is defined as a type of single-mode fiber that preserves the polarization state of light during propagation by introducing anisotropic stress in its core, minimizing cross ...



Learn about Polarization-Maintaining (PM) Optical Fibers, their unique properties, advantages, and significance in communications networks.



PM fibers achieve polarization maintenance through their unique design, which incorporates an asymmetric core or stress-applying parts. These elements create a birefringent ...



A polarization-maintaining (PM) fiber is a specialty optical fiber designed to preserve the linear polarization of light launched into it. It achieves this not by eliminating birefringence, but by having a ...



The goal in such applications is to minimize the amount of power coupled from one polarization state to another, or to keep the two polarization modes propagating in two separate ...

Contact Us

For more information, pricing, or custom energy solutions, please contact us:

Website: <https://gdroofing.co.za>

Email: sales@gdroofing.co.za

Phone: +27 72 418 9365

Address: 22 Electron Avenue, Isando, Johannesburg, 1600, South Africa

This document is for informational purposes only. Specifications subject to change without notice.

