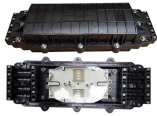


Portable Manganese and Iron Element Spectrometer



Portable Manganese and Iron Element Spectrometer



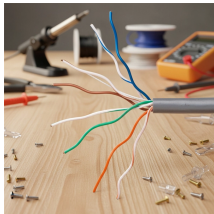
The handheld spectrometer mainly uses XRF technology to quickly and accurately analyze the content of multiple elements in the sample within a few seconds to tens of seconds, and can quickly perform ...



SPECTROSCOUT is a portable energy-dispersive XRF analyzer with much of the analytical power of top-grade benchtop analyzers



Bruker's portable mineral testers enable the fast & accurate elemental analysis of mineral's on-site, even in remote mining locations.



Our Belec Compact Port HLC is your reliable partner for mobile metal analysis. With its robust design and state-of-the-art technology, it delivers accurate results, whether in the laboratory or directly on ...



With advanced X-ray fluorescence (XRF) technology, this portable tool delivers lab-quality results in seconds—ideal for metal verification in the field or workshop.



This rugged 245x250x90mm portable spectrometer delivers fast, precise elemental identification in the field. The 50kV X-ray tube and high sensitivity Si-PIN diode detector provide accurate analysis of ...



Instrument can run without helium by the ultra near optical path design, and can detect the light elements from the beginning of Mg that fully meets the needs of specific users.



It can combine the built-in GPS latitude and longitude data and altitude data and import third-party GIS analysis software to build three-dimensional geographical distribution map of element content, so as ...



The SciAps PowerHouse X is a portable benchtop XRF spectrometer that offers on-site elemental analysis. Its 80 kV X-ray tube allows for enhanced sensitivity and a broader elemental range, making ...



Upstream exploration and production, rapid, real-time, on-site chemical analysis of rocks, cuttings, and cores that can be used to infer rock properties favourable to oil and gas production.

Contact Us

For more information, pricing, or custom energy solutions, please contact us:

Website: <https://gdroofing.co.za>

Email: sales@gdroofing.co.za

Phone: +27 72 418 9365

Address: 22 Electron Avenue, Isando, Johannesburg, 1600, South Africa

This document is for informational purposes only. Specifications subject to change without notice.

