

Power Communication Equipment Room Connection



Overview

This chapter covers structured wiring and methods of routing it from equipment rooms to desktops. It also discusses types of wire and cable, equipment rooms and telecommunications pathways and standards, as well as vendor selection considerations. PROVIDE SERVICE LOOP FOR ALL HORIZONTAL VOICE, DATA, AND VIDEO CABLES NOT TO EXCEED 10 FEET. LOCATION TO BE DETERMINED BY THE RUPM. PROVIDE (3) 30A SPARE CIRCUITS IN ELECTRIC PANEL. 3/4" AC FIRERATED PLYWOOD ON ALL WALLS, PAINTED WITH WHITE FIRE RETARDANT PAINT (DO NOT PAINT PLYWOOD LABEL). MOUNT. Contractors Refer to the previous sections of this TR Master Plan for specifications and other details required to design and construct an industry-compliant TR. 3 - 9) can be used for quality control of: 1. Telecom Room (TR) design during the Design Review phase 2. Channel Cable Tray: A fabricated structure consisting of a one-piece, ventilated-bottom or solid-bottom channel not exceeding 6 inches in width. They are what makes our internet connectivity, email, phone calls, virtual meetings, instant messaging, video conferencing, and wireless access possible.

Power Communication Equipment Room Connection



Proper planning of telecommunications spaces ensures not only code compliance and safety but also makes future expansions, equipment access, and thermal management easier. Whether you're ...



It also discusses types of wire and cable, equipment rooms and telecommunications pathways and standards, as well as vendor selection considerations. Planning is key to any successful equipment ...



This section includes the specifications for constructing and building out of Telecommunications Equipment Rooms (MDF/IDFs) to be used for supporting telecommunications ...



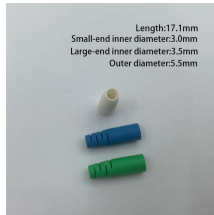
Proper planning of telecommunications spaces ensures not only code compliance and safety but also makes future expansions, equipment access, and thermal ...



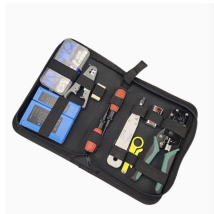
Adjust arrangements and locations of distribution frames, cross-connects, and patch panels in equipment rooms to accommodate and optimize arrangement and space requirements of telephone ...



Entrance Telecommunications Room (ETR): An enclosed architectural space for housing telecommunications equipment, cable terminations, and cross-connect cabling. This room is where ...



Ideally, it is preferable to have separate, redundant power feeders from the power company serving the switch room. These should be fed from two different substations, so that the failure of one substation ...



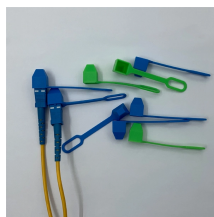
Equipment Grounding: A ground plate connected to the building main electrical ground system shall be mounted in the room with wiring sized as necessary by the engineer.



LOCATIONS TO BE COORDINATED WITH RUTGERS UNIVERSITY. BY ARCHITECT/ROOM CONSTRUCTION CONTRACTOR. COORDINATE LOCATION WITH RUTGERS UNIVERSITY. BY ...



Each equipment rack shall have two dedicated 20A circuits, one normal and one emergency power. Larger circuits may be required for specialized equipment. Lights and convenience outlets (at ...



A telecommunications room consolidates connectivity from outside service providers and all network-connected nodes within a building. They are what makes our internet connectivity, email, phone ...



Common bonding connections in the telecommunications closet space include (a) split bolt on cable basket, (b) jumper on ladder rack, (c) HTAP on TBB, and (d) auxiliary cable brackets on ladder rack.

Contact Us

For more information, pricing, or custom energy solutions, please contact us:

Website: <https://gdroofing.co.za>

Email: sales@gdroofing.co.za

Phone: +27 72 418 9365

Address: 22 Electron Avenue, Isando, Johannesburg, 1600, South Africa

This document is for informational purposes only. Specifications subject to change without notice.

