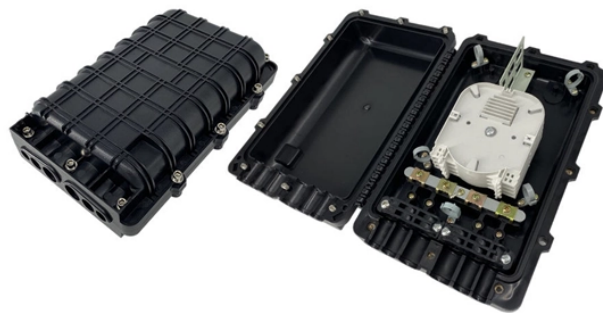


GDR Telecom Site Energy Systems

Power Plant 10kV Busbar



Power Plant 10kV Busbar



Copper busbar is a bread-and-butter power distribution solution for power generation and storage applications because of its highly conductive nature and ability to carry low- and high-voltage loads ...



Downloading this free, high-quality drawing allows you to streamline your design process, verify spatial constraints, and ensure your power distribution layout is compliant, safe, and efficient.



Our busbar systems for electrical installations offer a particularly easy way of fitting distribution systems with electrotechnical components. The modular design saves space, while quick assembly contacts ...



Circuits can be added and removed easily as they are located just above their respective racks. This allows you to make changes in a cost-efficient and timely manner. Our Vertiv Powerbar products also ...



The invention relates to a grid-connected structure for power generation integrated into a power grid, in particular to a grid-connected access structure for a distributed photovoltaic power...



Below is an overview of our core Busbar systems for plant solutions designed for industrial power distribution, material handling facilities, workshops, and manufacturing plants.



Busbars are metal bars that can be composed of numerous alloys but are most commonly copper or aluminum. Typical busbar applications include switchgear, panel boards, power invertors, powered ...



All high-voltage parts including the cable terminations, busbars and voltage transformers are metal-enclosed. Capacitive voltage detecting system to verify safe isolation from supply. Operation is only ...



Abstract: This special report firstly compares several types of medium voltage busbar systems, including enclosed busbar with shared enclosure, small phase-to-phase enclosed busbar, cable busbar, and ...



Good Answer: If you close the breaker without a PT in position, to anyone looking at local or remote meters or to some of the protection, it will appear the busbar is dead.

Contact Us

For more information, pricing, or custom energy solutions, please contact us:

Website: <https://gdroofing.co.za>

Email: sales@gdroofing.co.za

Phone: +27 72 418 9365

Address: 22 Electron Avenue, Isando, Johannesburg, 1600, South Africa

This document is for informational purposes only. Specifications subject to change without notice.

