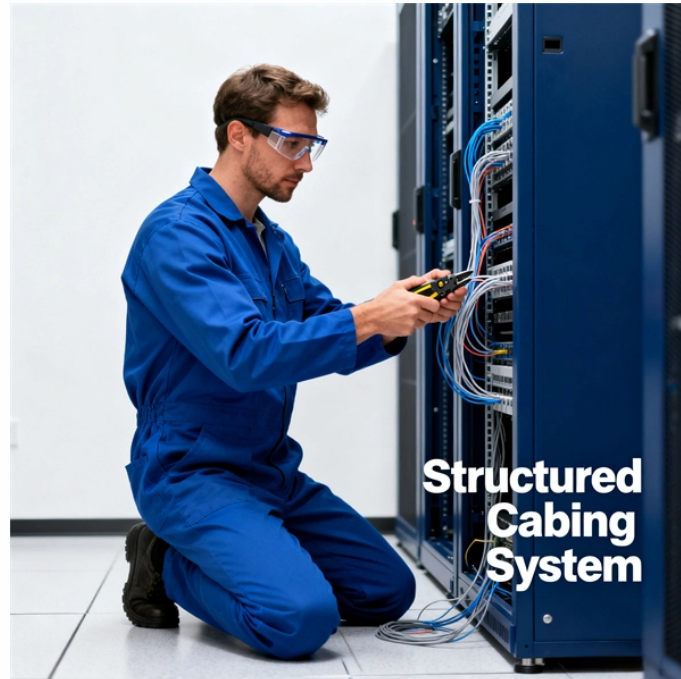


## Power cable layout in the fiber optic equipment room



## Power cable layout in the fiber optic equipment room



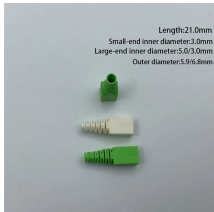
The power meter is a specialized light meter with adapters to allow connection to the fiber optic connectors on the cables and calibration at the wavelengths used in fiber optic systems.



Hybrid Cable for Robotics Hybrid cable for robotics combines power, control, signal, Ethernet, fiber optic, pneumatic tube or other functional units into one integrated cable design. It ...



It also discusses types of wire and cable, equipment rooms and telecommunications pathways and standards, as well as vendor selection considerations. Planning is key to any successful equipment ...

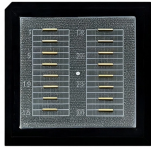


While fiber optic cables generally are all dielectric and carry no electrical power, it may be necessary to work in areas that have installed electrical power cables and hardware.

Waterproof and dustproof, reliable and safe  
The outer classic sink design allows the sealing ring of the cabinet and door to be seamlessly compressed without leaving a trace of gaps



Cables - Aggregate cross-sectional area of cables in steel sleeve to be max 33 percent of the aggregate cross-sectional area of the sleeve. Cables to be rigidly supported on both sides of wall assembly.



Designing a floor plan for a fiber optic cable manufacturing workshop is a meticulous process requiring careful consideration of space utilization, workflow optimization, and safety ...



Fiber-optic cables in substations can be installed in the same manner as metallic conductor cables; however, this practice requires robust fiber-optic cables that can withstand normal construction ...



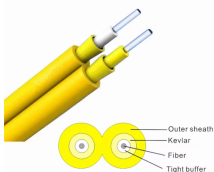
Optical fiber cords shall have the same fiber type as the optical fiber cabling and meet the requirements of ANSI/TIA-568.3-D. The minimum inside bend radius for optical fiber cord cable shall be 25 mm (1 ...



2. The fiber optic cable will enter a radio frequency site through a bus duct and be routed within 5 meters of an NCR03 pit inside a flexible PVC tube.  
3. Bends in the ...



This set of rules describes the layout that applies for cable connections between devices and cubicles, between cubicles or between devices. All cables are routed within a suitable EMC protection (pipes, ...



Fiber optic cable sequential numbers are required at each pole location and vault wall. Sequential numbers will identify conduit length, and slack left in vaults and at poles.



It is normal to be conservative over the specifications. Don't use the best possible specs for fiber attenuation or connector loss to allow some margin for installation and component degradation over ...



Cable ingress point into location must meet all acceptable cable routing standards; including specified manufacture's recommended space for outlet and associated cabling, fill ratios and power separation.

## Contact Us

For more information, pricing, or custom energy solutions, please contact us:

Website: <https://gdroofing.co.za>

Email: [sales@gdroofing.co.za](mailto:sales@gdroofing.co.za)

Phone: +27 72 418 9365

Address: 22 Electron Avenue, Isando, Johannesburg, 1600, South Africa

This document is for informational purposes only. Specifications subject to change without notice.

