

## Power cord can be routed through cable tray



### Overview

10 (B) (1), the smallest size single conductor allowed to be installed in a cable tray is 1/0 AWG. According to NEC Article 392. 1 (C) provides the designators for raceway trade sizes. All conductors of a circuit, including the neutral and equipment grounding conductors, must be run in the same raceway. Cable tray systems provide a safe, organized, and flexible method for supporting insulated conductors and cables in commercial and industrial electrical installations. When properly selected and installed, cable trays simplify routing, improve accessibility, and support future expansion while. This action will open submission form. This is a well built tray with easy to follow instructions. Are you a Rewards Member?

Yes Helpful?

maintain spacing or to keep cables in place when the tray is ect the minimum bend ra-dius for cables as they exit the bottom of the cable tray. A rung spacing of 6 to 9 inches (150 to 230 mm) is preferable when the cable tray cont d for instrumentation and control applications that require. NEC Article

392 explains cable trays, their components, appropriate wiring methods for cable trays, and instances where they are and are not permitted for use. My favorite cable management solutions are listed below, roughly in order of importance.

## Power cord can be routed through cable tray



Explore the factors affecting cable ampacity in trays, including thermal and electromagnetic effects. Learn calculation methods and best practices for safe installations.



FOR WORKSTATION CABLES: This J Channel Cable ...



These cord management trays mount under the rear of a desk and hold a surge protector or two, and enable easy routing of ...



All conductors of a circuit, including the neutral and equipment grounding conductors, must be run in the same raceway, cable, trench, cord, or cable tray; except as permitted by 300.3 (B) (1) through (4).



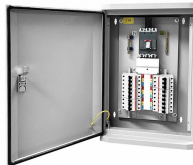
Cables and conductors must be secured to the cable tray at intervals according to installation instructions. For non-horizontal runs, cables should be fastened securely to transverse ...



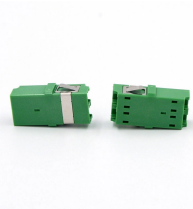
These cord management trays mount under the rear of a desk and hold a surge protector or two, and enable easy routing of power cords. As a bonus, that means that you need far less slack ...



This article will discuss different types of cable tray systems, their installation methods, and their advantages regarding long-term reasonable quality power cord management solutions.



Comprehensive guide to cable tray systems requirements: tray types, materials, loading, supports, bonding, routing, and best practices for safe electrical cable management.



FOR WORKSTATION CABLES: This J Channel Cable Raceway supports Laptop adapters, power strips, desktop/computer/PC cables, video/printer/charge cords; Wire management for your office or ...



Steel Ladder System Hubbell's NEXTFRAME® Ladder Tray is the effective and widely used cable runway that supports and delivers bundles of cable between cabinets, racks, and closets, along ...



Organize all your data cables, power cords, and power strips off the floor. Hide your cables under your feet to maintain a clean and tidy workspace and floor. □□□□□□□□□□ □□□□□□ □□□□□□□□□□The desk cable management under desk ...



This article will discuss different types of cable tray systems, their installation methods, and their advantages regarding long-term reasonable quality ...



In designing supports for a cable tray system, consideration should be given to the loads associated with future cable additions and any additional loading that may be applied to the cable tray system (e.g., ...

## Contact Us

For more information, pricing, or custom energy solutions, please contact us:

Website: <https://gdroofing.co.za>

Email: [sales@gdroofing.co.za](mailto:sales@gdroofing.co.za)

Phone: +27 72 418 9365

Address: 22 Electron Avenue, Isando, Johannesburg, 1600, South Africa

This document is for informational purposes only. Specifications subject to change without notice.

