

Power outage of high-voltage distribution box



Power outage of high-voltage distribution box



What is a high voltage box? The High Voltage Power Box combines the functionality of an Onboard Charger (OBC), a DC/DC converter and a PDU (Power Distribution Unit).



For example, for a smaller commercial office building, a power outage of considerable time, say several hours, may be acceptable, whereas in a larger commercial building or industrial plant only a few ...



Indoor high-voltage AC earthing switches serve as core safety auxiliary equipment for 40.5kV indoor power systems. They are mainly used to provide reliable earthing protection during the ...



Learn about what power quality is and different power quality problems in the distribution network such as single phasing, voltage fluctuation, power factor, improper phase sequence, voltage unbalance, ...



Distribution systems, typically rated below 34 kV, can tie directly into high-voltage transmission networks or be fed by sub-transmission networks via “step down” substations.



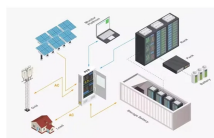
On a weekly basis, electric dispatch & scheduling personnel PROVIDE a list of untestable equipment to distribution engineering personnel to validate equipment that was reported offline in the field.



Many distribution networks with voltage ratings from 15.5kV to 38kV consist of overhead power lines. To increase reliability and resiliency, pole reclosers are installed to reduce the duration ...



Stay informed on power outages across the US with our live outage tracker. View an interactive national outage map and state-by-state breakdown of affected areas, updated regularly.



View the TI High-voltage power distribution box block diagram, product recommendations, reference designs and start designing.



Capable of handling higher induced current and voltage and meets the requirements of IEC 62271-102 standard type B. Rotary conductive blade design provides short operational torque, high contacting ...

Contact Us

For more information, pricing, or custom energy solutions, please contact us:

Website: <https://gdroofing.co.za>

Email: sales@gdroofing.co.za

Phone: +27 72 418 9365

Address: 22 Electron Avenue, Isando, Johannesburg, 1600, South Africa

This document is for informational purposes only. Specifications subject to change without notice.

