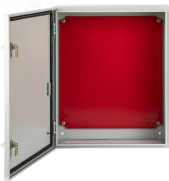


Practical Diagrams of Fiber Optic Patch Panels



Use tube optical fibre cables The fibre-optic patch panel KB201 is intended for 48 fibres terminated with SC-duplex connectors. Each KB201 can hold a maximum of 4 splice cassettes corresponding to 48 ...



Be among the first to receive important product updates, insights and news.



An optical Distribution Frame (ODF) or patch panel is the starting point for optical cables, most commonly found in rack cabinets in Head End (HE)/Central Office (CO)/Point of Presence ...



Simplify connections and cable management with our versatile selection of fiber optic patch panels and fiber patch panel adapters. Available in a wide range of customizable options, our fiber patch panels ...



What is a Fiber Patch Panel? Fiber optic patch panels are enclosures that act as a distribution hub for fiber cable. A bulk (multi-strand) fiber cable enters the patch panel and then each fiber strand is ...

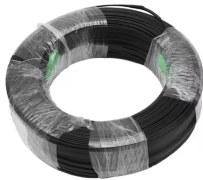


It includes autocad drawings of fiber optic patch panels and discusses components like connectors, enclosures, and cabinets related to fiber optic patch panels.



Equipped with a removable **Mounting Plate** inside the enclosure, enabling customized drilling and secure component mounting.

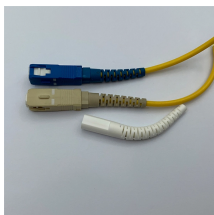
Learn about its types, benefits, installation tips, and best practices to improve scalability and reliability.



With the right stencil packs, engineers can quickly jump-start a big drawing from literally a blank page, and visually represent fiber optic cables, patch panels, splice trays, ODFs, network ...



When you run a Patch Panel Connection Report, the report displays the connections on the various sides of the fiber components. Most typically, it displays the front and the back sides.



AutoCAD drawing featuring detailed plan and elevation views of a 24T Fiber Optic Patch Panel.



The Fiber Optic Patch Panel come in various types, each designed to meet specific requirements and applications. Here''s an overview of the main types of fiber optic patch panels:

Contact Us

For more information, pricing, or custom energy solutions, please contact us:

Website: <https://gdroofing.co.za>

Email: sales@gdroofing.co.za

Phone: +27 72 418 9365

Address: 22 Electron Avenue, Isando, Johannesburg, 1600, South Africa

This document is for informational purposes only. Specifications subject to change without notice.

