

Price of placing electrical distribution boxes on construction sites



Price of placing electrical distribution boxes on construction sites



These services include an updated price and labor guide, complete backup electrical estimating service, computerized databases, electrical estimating software, electrical estimating handbooks, and ...



An estimate is only as good as the information it is based on, and the NECA Manual of Labor Units (MLU) has been the estimating resource of choice for electrical contractors since 1923.



In summary, straightforward swaps are cheaper; major reconfiguration or extensive rewiring drives the price higher. If your project involves changes to the electrical service line coming from the utility, ...



This article outlines the cost factors, price ranges, and practical budgeting advice for a U.S. audience. The price depends on electrical code upgrades, permit needs, and whether upgrades require panel ...



Temporary power distribution equipment supports safe power access for construction sites, events, and temporary setups. Check availability for reliable power solutions.



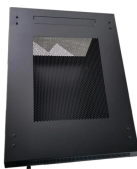
Typical cost ranges for replacing a distribution box or service panel in the United States vary widely based on panel size, amperage, labor, and whether a full service upgrade is needed.



Junction box costs range from low-price indoor models (\$10-\$60) to weatherproof units (\$70-\$450), with installation averaging \$100-\$300 depending on location and materials. If you're ...



Prices vary by region due to labor rates and permitting complexity. In the Northeast, total costs including permit fees tend to run 5-15% higher than the national average; the Southeast often ...



Explore the complete breakdown of distribution box costs, including safety features, scalability options, and operational benefits. Learn how to maximize your investment in electrical distribution systems.



Browse power distribution boxes with circuit breaker protection and multiple outlet configurations. Shop durable solutions for construction and emergency use.

Contact Us

For more information, pricing, or custom energy solutions, please contact us:

Website: <https://gdroofing.co.za>

Email: sales@gdroofing.co.za

Phone: +27 72 418 9365

Address: 22 Electron Avenue, Isando, Johannesburg, 1600, South Africa

This document is for informational purposes only. Specifications subject to change without notice.

