





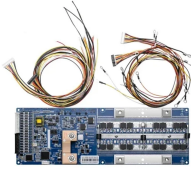
## Professional PoE Switch Installation

### Ordering information

|   |   |   |   |  |
|---|---|---|---|--|
| NO.   | 1   | 2   | 3   | 4  |
| Model   | FS4M1   | FS8M2   | FS12M3  | FS16M4   |
| Product name                                  | Patch Panel   | Patch Panel   | Patch Panel   | Patch Panel  |
| Illustration                                  |  |  |  |  |
| HU  | 1   | 2   | 3   | 4  |
| Maximum number of cores                       | 96  | 192   | 288   | 384  |
| Product size (excluding modules and adapters) | 482.6*208.7*43.7mm  | 482.6*208.7*88.1mm  | 482.6*208.7*132.5mm   | 482.6*208.7*177.7mm  |
| Standard color code                           | RAL9005   | RAL9005   | RAL9005   | RAL9005  |



## Professional PoE Switch Installation



Connect devices to the RJ-45 ports (1-24) on the switch front panel. Use Category 5e (Cat 5e) Ethernet cables terminated with RJ-45 connectors to make Gigabit Ethernet connections. Connect one port on ...



You just bought a nice PoE (Power over Ethernet) switch with cameras and access points. You realize you need to buy Ethernet cable to handle this, but you are a bit worried about ...



Over the years, Power over Ethernet (PoE) has become a game-changer in today's IT network infrastructures. Today, we'll provide a clear guide for IT professionals on PoE device installation and ...



The 10/100 Mbps RJ45 ports on the switch support the Power over Ethernet (PoE\*) function, which can automatically detect and supply power to those powered devices (PDs\*) complying with IEEE ...



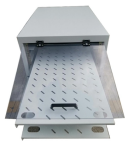
A guide to how PoE works, how to select compatible equipment, and what you need to be aware of and test for when installing or troubleshooting PoE.



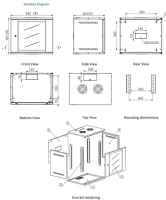
Product Usage Instructions Installation: 1. Connect the Pro XG 10 PoE to a power source using the provided power adapter. 2. Connect your network devices to the Pro XG 10 PoE using Ethernet cables.



Thank you for purchasing the Ubiquiti Networks® TOUGHSwitch™ PoE Pro. This Quick Start Guide is designed to guide you through installation and includes warranty terms.



Here we provide a step-by-step guide on setting up your 24-Port Long-Range Power over Ethernet (PoE) Switch! We'll walk you through installing and ...

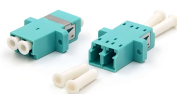


High-performance switching with up to 25G SFP28, 10GbE & 2.5GbE PoE+++ for robust, high-capacity networking.



UniFiTelecomm Cabling

Note: Although the cabling can be located outdoors, the UniFi Switch itself should be housed inside a protective enclosure.



ABOUT THIS VIDEO Learn \*how to install PoE switches step-by-step\* in this complete guide designed for beginners and professionals.

## Contact Us

For more information, pricing, or custom energy solutions, please contact us:

Website: <https://gdroofing.co.za>

Email: [sales@gdroofing.co.za](mailto:sales@gdroofing.co.za)

Phone: +27 72 418 9365

Address: 22 Electron Avenue, Isando, Johannesburg, 1600, South Africa

This document is for informational purposes only. Specifications subject to change without notice.

