

## Qsfp2 km optical module



## Qsfp2 km optical module



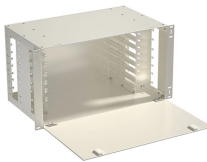
**ABSTRACT:** This specification defines the mechanical requirements of the "QSFP112" and "QSFP224" pluggable solutions which include the QSFP2 cages, connectors, and modules that enable QSFP+ ...



Our QSFP portfolio provides a simple upgrade path from 10 Gbps NRZ to 112Gbps PAM-4 — including four channels of data in one pluggable interface. Each channel is capable of transferring data from 10 ...



Our QSFP portfolio provides a simple upgrade path from 10 Gbps NRZ to 112Gbps PAM-4 — including four channels of data in one pluggable interface. Each ...



QSFP modules employ various optical connector types depending on the application and reach requirements. The mechanical interface must ensure proper fiber alignment and minimize ...



They expand Cisco routed optical networking applications to include 800G links and are compatible with Cisco and third-party 800G-capable routers, switches, and transponders with QSFP ...



FTL4C1QL2C QSFP+ transceiver modules are compliant with the QSFP+ MSA and are compatible with IEEE 802.3ba 40GBASE-LR4 up to 2 km. Digital diagnostic functions are available via an I2C ...



ABSTRACT: This specification defines the mechanical requirements of the "QSFP112" and "QSFP224" pluggable solutions which include the QSFP2 cages, connectors, and modules that enable QSFP+ ...



QSFP+ 40G PSM IR4 1310nm 2km Optical Transceiver Module CISCO, HUAWEI, H3C, Juniper, D-link, HP, IBM, dell, Mikrotik, Aruba, Quidway Compatible is a Four-Channel, Pluggable, ...



Our 40G CWDM QSFP+ 2km transceiver provides cost-effective short-reach connectivity for metro networks. Supporting 2km transmission over single-mode fiber with 4 CWDM wavelengths ...



Learn the differences between SFP, SFP+, SFP28, QSFP+, and QSFP28 optical module form factors, including speeds, interfaces, and deployment scenarios.



The Brocade 4x32 GFC (2 Km) QSFP28 modules are hot-swappable, low-voltage (3.3 V) digital diagnostic optical transceivers that support high-speed serial links over single mode optical fiber at ...



Get a high-performance 40G QSFP+ LR4 2km optical transceiver module for short to mid-range data transmission with low power consumption and reliability.

## Contact Us

For more information, pricing, or custom energy solutions, please contact us:

Website: <https://gdroofing.co.za>

Email: [sales@gdroofing.co.za](mailto:sales@gdroofing.co.za)

Phone: +27 72 418 9365

Address: 22 Electron Avenue, Isando, Johannesburg, 1600, South Africa

This document is for informational purposes only. Specifications subject to change without notice.

