

# GDR Telecom Site Energy Systems

## Rear cable tray



## Rear cable tray



Vertical Cable Organizers provide easy cable management solutions for a single rack. Toollessly attaches to the PDU/Cable management brackets providing a vertical cable pathway.



Leviton has a wide offering of cable management solutions for both copper and fiber installations. Products include vertical and horizontal cable managers, rear cable managers, hook and loop ...



This cold-rolled steel SmartRack® Cable Trough helps eliminate cable stress by routing cables from the front of your wide rack cabinet to the rear, where you can more easily organize and access them.



Adjustable depth cable manager for front-to-rear routing. Prevents cable sag and supports organized cable pathways in racks and cabinets.



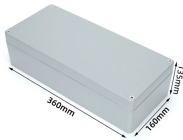
Cable manager to be used with two 30"W ES Enclosures The Great Lakes CM-14 is an Intra-cabinet Cable Management Trough; to be used when two 30"W ES Enclosures are networked together ...



Front to rear data center cabinet trough routes cables within a data center cabinet. Designed for mounting standard IT rack mount equipment.



From heavy power cable pathways on oil drilling platforms to data center cabling, explore the cable tray that's strong yet easy to install. Fast installation with dependable support.



Front to Rear Cable Manager. Adjustable depth front to rear.



Get cable management trays that protect your workspace and prevent tripping hazards. Find models suitable for different desk thicknesses with secure mounting.



Featuring an adjustable front-to-rear design, this versatile tray supports clean cable pathways between rack-mounted equipment while reducing cable strain, improving airflow, and simplifying maintenance ...

## Contact Us

For more information, pricing, or custom energy solutions, please contact us:

Website: <https://gdroofing.co.za>

Email: [sales@gdroofing.co.za](mailto:sales@gdroofing.co.za)

Phone: +27 72 418 9365

Address: 22 Electron Avenue, Isando, Johannesburg, 1600, South Africa

This document is for informational purposes only. Specifications subject to change without notice.

