

## Receiving area of fiber optic sensing module



## Receiving area of fiber optic sensing module



The optical module is to be used in an area which is susceptible to radiated noise, increase the shielding by covering the optical module and the power line filter with a metallic cover.



Fiber optic sensors are compact because the detection circuit is located in the amplifier, allowing for detection even in narrow spaces. Installation and adjustment are easy and the devices have high ...



Installed by drilling a hole and using a set screw. The sensor is integrated into an L-shaped bracket, which simplifies installation. Great for small object detection. Spot size and focal distance are ...



View and Download BOJKE ER2-22N operating instruction online. Dual number display fiber optic sensor. ER2-22N accessories pdf manual download. Also for: Er2-22p.



Additional optical fibers have been produced, including plastic optical fibers, glass optical fibers with plastic claddings, photonic crystal (holey) optical fibers, doped active optical fibers, and others.



In combination with the twin output function of the E3NX-FA amplifier, the diffuse reflective area monitoring fibers can detect very small objects (e.g. needles) and a second state (e.g. cover present). ...



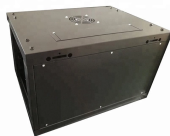
Fiber-Coupled Optical Receiver Modules feature high sensitivity and high overload power, in addition to wide dynamic ranges. These receiver modules are designed ...



The sensing section of a Fiber Unit has no electric circuits. This makes it highly reliable even under severe environmental conditions, such as temperature, vibration, shock, water, and electrical noise ...



The optical module is to be used in an area which is susceptible to radiated noise, increase the shielding by covering the optical module and the power line filter with a metallic cover.



Discrete fiber optic receivers are photodiodes in an adaptive housing used to receive a signal over a fiber optic cable. The device contains no drive circuitry. Fiber optic receivers are differentiated by ...



View and Download BOJKE ER2-22N operating instruction online. Dual number display fiber optic sensor. ER2-22N accessories pdf manual download. Also for: ...



Distributed sensors are able to sense at any point along a single fiber line, typically every meter over many kilometers of length.



Mouser offers inventory, pricing, & datasheets for Receiver Modules Fiber Optic Transmitters, Receivers, Transceivers.

## Contact Us

For more information, pricing, or custom energy solutions, please contact us:

Website: <https://gdroofing.co.za>

Email: [sales@gdroofing.co.za](mailto:sales@gdroofing.co.za)

Phone: +27 72 418 9365

Address: 22 Electron Avenue, Isando, Johannesburg, 1600, South Africa

This document is for informational purposes only. Specifications subject to change without notice.

