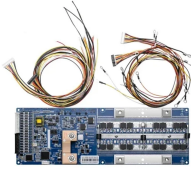


## Relay Protection Communication Point Table



## Relay Protection Communication Point Table



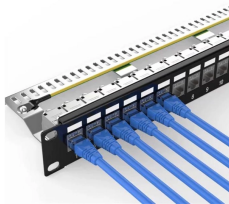
Fundamental concepts and terminology will be taught using the electromechanical overcurrent relay as a foundation and then these concepts will be expanded to modern numerical relays.



The new, patented relay-to-relay logic communication technique repeatedly sends the status of eight programmable internal relay elements, encoded in a digital message, from one relay to the other ...



Table 2 in Section 5 defines the requirements for allowable message transit times through the communications components of an electrical protection system. The times contained in the table ...



This publication contains new and updated information as indicated in the following table. The protection and control devices in electrical equipment can be referred to by numbers, with appropriate suffix ...



Protective relays and devices have been developed over 100 years ago to provide “lastline” of defense for the electrical systems. They are intended to quickly identify a fault and isolate it so the balance of ...



presentation of protection and control relaying. The report will identify methodology behind these practices, present issues raised by the integration of microprocessor relays and the ...



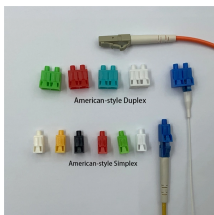
Also principles of various protective relays and schemes including special protection schemes like differential, restricted, directional and distance relays are explained with sketches. The ...



Protection relay selection table Please note before using selection table! number = Number of stages, shots, X = Function supported inputs or outputs O = Function available as option ...



Abstract: Information on the concepts of protection of ac transmission lines is presented in this guide. Applications of the concepts to accepted transmission line-protection schemes are also presented.



REF615 Modbus Point List Manual - Feeder protection - Modbus Communication Manual - REF615 Feeder Protection and Control - 5.0 IEC - IEC

## Contact Us

For more information, pricing, or custom energy solutions, please contact us:

Website: <https://gdroofing.co.za>

Email: [sales@gdroofing.co.za](mailto:sales@gdroofing.co.za)

Phone: +27 72 418 9365

Address: 22 Electron Avenue, Isando, Johannesburg, 1600, South Africa

This document is for informational purposes only. Specifications subject to change without notice.

