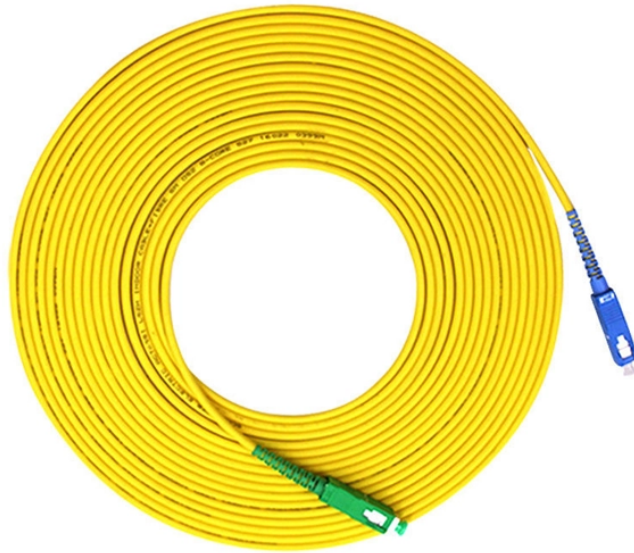


Relay Protection Operation Handover



Relay Protection Operation Handover



This course is intended for technicians and engineers responsible for the testing and calibration of protective relays, reclosers, and other protective systems.



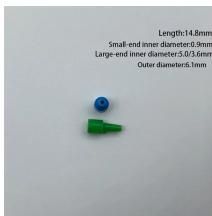
Operation, maintenance, and field test procedures for protective relays and associated circuits (photo credit: Omicron) The protection circuits include all low-voltage devices and wiring ...



Several operating coils can be used to provide "bias" to the relay, allowing the sensitivity of response in one circuit to be controlled by another. Various combinations of "operate torque" and "restraint ...



A fast and selective arc fault mitigation for air-insulated LV & MV switchgear and Relion protection and control relays and sensor technology protect staff and plant facilities for many years.



These courses describe the fundamental concepts of electric system protection and provides detailed examples of the application of relaying. In most cases, the material is based on electro-mechanical ...



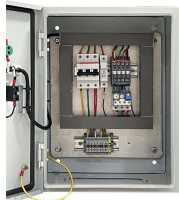
Identify which maintenance method (time-based, performance-based per PRC-005 Attachment A, or a combination) is used to address each Protection System, Automatic Reclosing, and Sudden ...



The objective of this presentation is to convey a basic understanding of protective relays to an audience of engineers already familiar with low voltage protective device coordination.



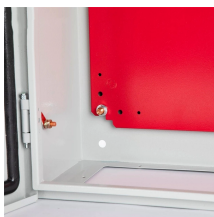
Relay systems protect high-voltage equipment and transmission lines to ensure safe, stable systems. Although failure of a protective relay system may have severe local or regional impacts, most ...



Operation, maintenance, and field test procedures for protective relays and associated circuits (photo credit: Omicron) The protection circuits ...



Protective relays and devices have been developed over 100 years ago to provide “lastline” of defense for the electrical systems. They are intended to quickly identify a fault and isolate it so the balance of ...



The protection system includes protective relays, associated communications systems, voltage and current sensing devices, station batteries, and direct current control circuitry.

Contact Us

For more information, pricing, or custom energy solutions, please contact us:

Website: <https://gdroofing.co.za>

Email: sales@gdroofing.co.za

Phone: +27 72 418 9365

Address: 22 Electron Avenue, Isando, Johannesburg, 1600, South Africa

This document is for informational purposes only. Specifications subject to change without notice.

