

## Relay protection SEO reading



## Relay protection SEO reading

Mesh door/glass door optional



To accomplish these goals, we must examine all possible types of fault or abnormal conditions which may occur in the power system. We must further examine the possibility that ...



Discover the types of protection relays, their applications, and essential testing procedures to ensure grid reliability and safety. Learn about tools like secondary injection test sets.



The norms of protection of generators, transformers, lines and ...



Name two protective devices For what purpose is IEEE device 52 used? Why are seal-in and 52a contacts used in the dc control scheme? In a typical feeder OC protection scheme, what does the ...



A fast and selective arc fault mitigation for air-insulated LV & MV switchgear and Relion protection and control relays and sensor technology protect staff and plant facilities for many years.



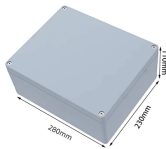
What is a Protection Relay? An electrical device designed to detect some specified condition in a power system, and then command a circuit breaker either to trip or to close in order to protect the integrity ...



The new, patented relay-to-relay logic communication technique repeatedly sends the status of eight programmable internal relay elements, encoded in a digital message, from one relay to the other ...



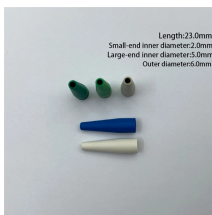
The norms of protection of generators, transformers, lines and capacitor banks are also given. The procedures of testing switchgear, instrument transformers and relays are explained in detail.



What is a Protection Relay? An electrical device designed to detect some specified condition in a power system, and then command a circuit breaker either to trip or ...



Protection category refers to technical articles dedicated to relay protection of various power substation and transmission & distribution equipment.



Fundamental concepts and terminology will be taught using the electromechanical overcurrent relay as a foundation and then these concepts will be expanded to modern numerical relays.



Protective relays and devices have been developed over 100 years ago to provide “lastline” of defense for the electrical systems. They are intended to quickly identify a fault and isolate it so the balance of ...

## Contact Us

For more information, pricing, or custom energy solutions, please contact us:

Website: <https://gdroofing.co.za>

Email: [sales@gdroofing.co.za](mailto:sales@gdroofing.co.za)

Phone: +27 72 418 9365

Address: 22 Electron Avenue, Isando, Johannesburg, 1600, South Africa

This document is for informational purposes only. Specifications subject to change without notice.

