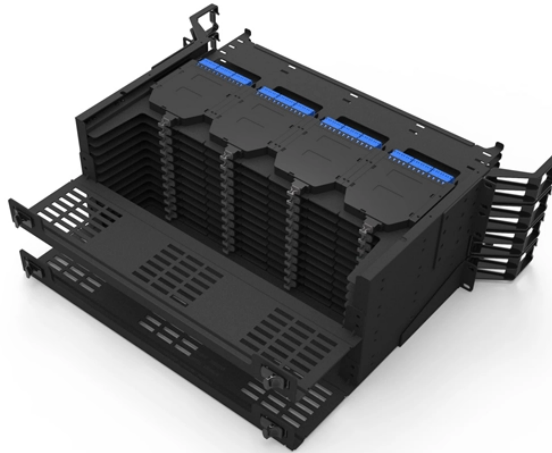


# Requirements for incoming cables to fire protection distribution boxes



## Overview

Cable splices and terminations of PLFA conductors must be made in listed fittings, boxes, enclosures, fire alarm devices, or utilization equipment [110]. Where installed exposed, cables shall be adequately supported and installed to maximize. Ex 1: Power-limited fire alarm (PLFA) cables selected per Table 760. 22 (B) Ex can be installed in ducts specifically fabricated for environmental air. Shields of cables for fire alarm, security, signaling systems, and emergency communications shall be. 1. 2. This guide breaks down the essential requirements of Section 700. 10 to help ensure compliance and reliability. Identification of Emergency Circuits Proper identification is essential for emergency systems to avoid confusion during maintenance or emergencies.

## Requirements for incoming cables to fire protection distribution box



Fire-resistive cable systems installed outside the fire-rated rooms that they serve, such as the electrical room or the fire pump room, shall comply with the requirements of 728.5(A) through (H) and all other ...



All cables for fire alarm, security, signaling systems, and emergency communications shall be shielded twisted pair cables or installed to comply with the performance requirements of the system.



Complete guide to NEC 2026 Article 760 for fire alarm contractors. PLFA vs NPLFA, cable types, and the new multi-article inspection framework.



Detailed guide to fire alarm system cables requirements: cable types, ratings, routing, separation, protection, and installation best practices for reliable fire alarm performance.



Fire alarm cables must be secured by hardware (e.g., straps, staples, hangers, listed cable ties, or similar fittings) identified for securement and support used in a manner that will not damage the cable.



Choosing the right cable type, rating, and shielding configuration is not optional; it is a code requirement that directly affects system reliability, inspection outcomes, and occupant safety.



Fire-Rated Assemblies: Feeder circuits must be enclosed in assemblies with a minimum 2-hour fire rating or protected by 2 inches of concrete. Fire-Resistant Cables: All fire-resistant ...



Fire alarm cables must be secured by hardware (e.g., straps, staples, hangers, listed cable ties, or similar fittings) identified for securement and support used in a manner that will not damage the cable.



Since NPLFA fire alarm systems present a risk of electric shock (like any other building's power wiring), the cable must be installed in accordance with the requirements of Chapters 1-4 of NFPA 70.



Feeder-circuit wiring shall meet one of the following conditions: (1) Be installed in spaces or areas that are fully protected by an approved automatic fire suppression system. (2) Be a listed electrical circuit ...

## Contact Us

For more information, pricing, or custom energy solutions, please contact us:

Website: <https://gdroofing.co.za>

Email: [sales@gdroofing.co.za](mailto:sales@gdroofing.co.za)

Phone: +27 72 418 9365

Address: 22 Electron Avenue, Isando, Johannesburg, 1600, South Africa

This document is for informational purposes only. Specifications subject to change without notice.

