

Right-angle edge-sealed cable tray



Right-angle edge-sealed cable tray



Cablofil steel trough trays provide the strength and security required when then need to limit cable access is of primary importance.



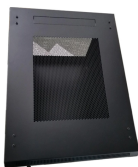
Heavy duty cable trays and cable ladders are manufactured from pre-galvanized, electro-galvanized, or hot-dipped galvanized sheet metal, designed to meet ideal environmental working conditions for ...



TechLine Mfg perforated angle & channel cable trays from hot dipped galvanized, aluminum, & 304 SS finishes available. Contact us for a quote!



Cable channel T& B offers cable channel in solid or ventilated straight sections. Ventiladed channel has burr-free oblong punched holes for easy access. Ty-Rap cable tie slots are provided between each ...



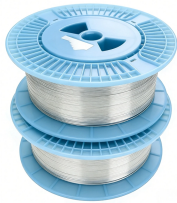
Choose from our selection of cable trays, including over 850 products in a wide range of styles and sizes. Same and Next Day Delivery.



Our wind certification report provides you with list of acceptable B-Line series cable tray supports, fittings and covers based off of the environmental conditions, cable loading, and type of cable tray in your ...



The Cable Tray is a simple cable management solution to help organize your desk's wires and cables.



Please click the appropriate link below to view the catalog section as a PDF.



Bahra Electric Cable Trays are an essential component of any well-designed electrical infrastructure, providing a safe, organized, and easily accessible pathway for routing and managing cables, wires, ...



These fittings help in maintaining support of the cable tray system. Shop Graybar's collection of cable tray and fittings to find exactly what works for your job.

Contact Us

For more information, pricing, or custom energy solutions, please contact us:

Website: <https://gdroofing.co.za>

Email: sales@gdroofing.co.za

Phone: +27 72 418 9365

Address: 22 Electron Avenue, Isando, Johannesburg, 1600, South Africa

This document is for informational purposes only. Specifications subject to change without notice.

