

SC12 Core Fusion Fiber Tray



SC12 Core Fusion Fiber Tray



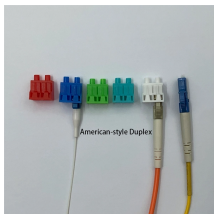
The trays are engineered to use with both loose tube and tight-buffered optical cables. Their generous size and craft-friendly design help prevent induced attenuation due to fiber bending.



Fiber splice trays for Corning, PLP, AFL, Multilink enclosures. Holds fusion or mechanical splice sleeves. Coyote, Starfighter, Lite-Grip, Type 2S, 2R, 2M, 4A, 4R, 4S, and more.



Amazon : fiber splice tray 12/24 Core Fiber Optic Splice Tray ABS Patch Panel Cassette for ODF/FTTH Fusion Splicing Closure with Shrinkable Cable Management 2Pack A-004-a



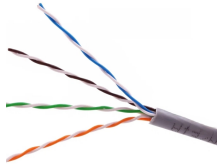
It supports up to 12 fiber cores with SC/APC connectors, featuring angled physical contact technology to effectively reduce back reflection and ensure stable signal transmission.



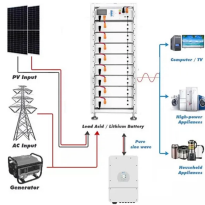
The 12-Fiber transparent fusion splice tray is ideal for fusion splicing single fiber. ...



The 12-Fiber transparent fusion splice tray is ideal for fusion splicing single fiber. The see through cover and mylar insert enable easy viewing when visual fault locator (VFL) testing and verification is ...



This Multilink Fiber Optic Splice Tray safely routes and stores 12 fusion spliced fiber. Made in the USA



This splice tray neatly arranges and safeguards fiber optic splices, enabling seamless signal transmission. With its 12 - core design, it can manage multiple fiber connections.



12 Core ABS Plastic Fiber Optic Splice Tray Economical Network Tool Splice Cassette for ODF. Standard 12 port copper cable module. Can be used for copper cable/fiber optic conversion. ...



Route fibers into splice tray using spiral transportation or fiber furcation tubes and secure with cable ties. Splice fibers per local practice. Place spliced fibers into the sleeve holders arranged by color code.



The optical fiber splicing tray is designed to provide a location for storing and protecting optical cables and splicing. It is mainly used for management of cable junction box and wall mounted junction box.

Contact Us

For more information, pricing, or custom energy solutions, please contact us:

Website: <https://gdroofing.co.za>

Email: sales@gdroofing.co.za

Phone: +27 72 418 9365

Address: 22 Electron Avenue, Isando, Johannesburg, 1600, South Africa

This document is for informational purposes only. Specifications subject to change without notice.

