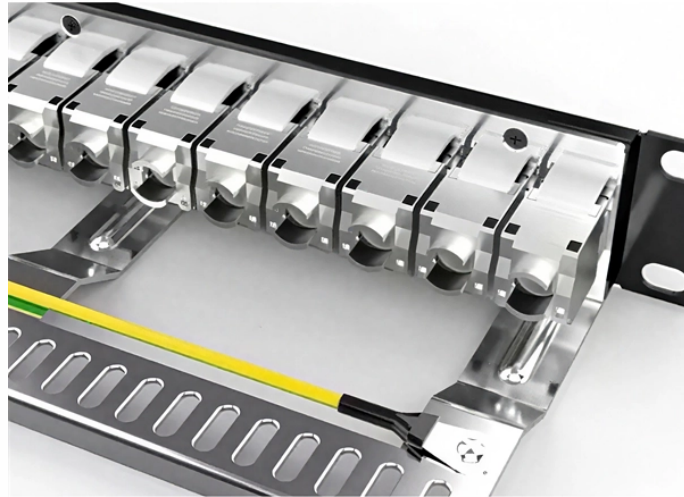


Schematic diagram of a South Korean industrial switch



Schematic diagram of a South Korean industrial switch



Electrical drawings are mostly covered in this category (e.g. motor control schematics, wiring diagrams) and text tables/schedules such as cable schedule, lighting schedule, etc.



This guide will explain the essentials of industrial wiring diagrams, their types, common symbols, and best practices for professionals working in industrial settings.



Cable Terminator Kyungdong's 25kv Cable Terminator is an all-in-one contamination withstand cable terminator made for the first time in Korea in 1982 with newly developed technology.



Welcome to DigiKey's free online schematic and diagramming Tool. Scheme It allows you to produce highly detailed schematic diagrams, add corresponding part numbers, export your design in multiple ...



Learn how to draw industrial electrical wiring diagrams with standard symbols. Discover tools, tips, and best practices for efficient industrial system design.



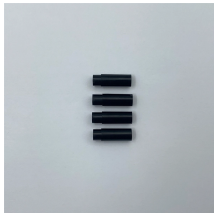
Our Surge Protection Device & Lightning Protection Products are designed to protect your equipment from voltage surges and spikes caused by lightning strikes, power grid fluctuations, and other ...



The drawings listed in the table below apply to all KCS/KCP/KCC/KSSB models equipped with the Decision-Maker MPAC1200 or Decision-Maker MPAC1500 controller. Model Transition Amps Volts ...



Downloadable PDF service manuals, repair manuals, schematics, parts lists, circuit diagrams, disassembly, troubleshooting and service menu guides for hundreds of electronics brands.



Download factory PDF manuals instantly — operation, maintenance, repair, wiring, and parts manuals for lathes, mills, press brakes, grinders, and more. Preserving industrial knowledge for machinery ...

Contact Us

For more information, pricing, or custom energy solutions, please contact us:

Website: <https://gdroofing.co.za>

Email: sales@gdroofing.co.za

Phone: +27 72 418 9365

Address: 22 Electron Avenue, Isando, Johannesburg, 1600, South Africa

This document is for informational purposes only. Specifications subject to change without notice.

