

Sealing of cable holes in explosion-proof distribution boxes



Sealing of cable holes in explosion-proof distribution boxes



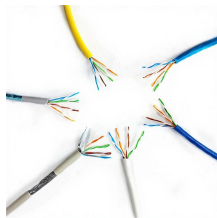
The sealing integrity of the cables entering and exiting the box must be maintained. This includes utilizing explosion-proof putty for sealing, based on the ...



Generally, conduit seals are required within 18 inches of the point of entry to explosion-proof enclosures. This requirement seeks to contain explosions and flames within the enclosure and ...



In phase 1, the first explosion occurs and spreads to the following enclosures, due to the lack of sealing fittings. During the phase 2 the pressure increases, causing a second burst of greater ...



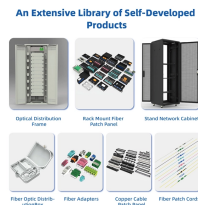
The sealing integrity of the cables entering and exiting the box must be maintained. This includes utilizing explosion-proof putty for sealing, based on the tightness of the cables.



It's not just about compliance - it's about creating intrinsically safe systems where cable management and enclosure installation don't just meet standards but exceed them in design ...



Use a wooden stick to force the wires apart, and pack the fiber tightly around all wires. The dam must be tight and strong enough to keep the sealing compound from leaking out before it sets up. The ...



The purpose of using a roxtec ex sealing system is to create an intrusion-proof passage for cables. This is achieved by allowing the ca-bles to be routed through a roxtec frame. roxtec sealing modules are ...



Published in: 2022 China International Conference on Electricity Distribution (CICED) Article #: Date of Conference: 07-08 September 2022 Date Added to IEEE Xplore: 02 November 2022



After the cable is inserted and the compression seal tightens around the outer sheath, a setting compound is poured into the gland body. This compound flows around and between the ...



At Douglas Electrical Components, we provide explosion proof electrical fittings such as electrical feedthroughs, explosion proof wire seals, and wire bushings for hazardous locations in custom and ...



Proper sealing of wiring methods in classified locations is critical. A correctly installed seal-off fitting keeps any sparks occurring in a junction box from igniting flammable materials that may be present ...

Contact Us

For more information, pricing, or custom energy solutions, please contact us:

Website: <https://gdroofing.co.za>

Email: sales@gdroofing.co.za

Phone: +27 72 418 9365

Address: 22 Electron Avenue, Isando, Johannesburg, 1600, South Africa

This document is for informational purposes only. Specifications subject to change without notice.

