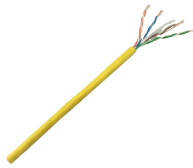


GDR Telecom Site Energy Systems

Sensor Fiber Optics Azbil



Sensor Fiber Optics Azbil



Fiber Optic Photoelectric Sensors Azbil fiber optic photoelectric sensors provide easy operation and high performance for a variety of applications.



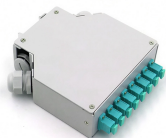
Vane Type Photoelectric Sensors with Self-contained Amplifier (HPV Series) Sensors with 2 optical axes in an easy-to-use size (vane width 25mm, depth 35mm) save space and reduce wiring



Azbil's Wet Process and Fiber units are specialized optical fiber sensors used primarily in the semiconductor and liquid crystal manufacturing process to detect the dropping of minuscule parts, ...



Azbil's Wet Process and Fiber units are specialized optical fiber sensors used primarily in the semiconductor and liquid crystal manufacturing process to detect the dropping of minuscule parts, ...



Fiber-optic switches that offer reliable detection and simple operation. Switches with 2 optical axes in an easy-to-use size (vane width 25 mm, depth 35 mm) save space and reduce wiring.



Highly bend-tolerant optical fiber cables are used for operation inside a moving device. Unaffected by light-level changes or stain buildup, the Model HPF-47 Fiber Units for Small Parts Passage Detection ...



Emergency after hours shipping may be available. Call (888) 437-6645 for more information. Product images shown are for illustration purposes only and may not be an exact representation of the ...



Azbil fiber optic photoelectric sensors provide easy operation and high performance for a variety of applications.



Azbil HPX-EG00 Standard Sensitivity Digital Fiber Optic Amplifiers are equipped with an automatic adjustment function for stable detection with easy operation. To simultaneously display amounts of ...



Photoelectric Sensors & Switches - Fiber-optic - Fiber Units - Area Thru Scan - Array type, flat optical configuration, area width 5.25 mm, shape A, operating temperature -22 °F (-30 °C) to 158 °F (70 °C), ...

Contact Us

For more information, pricing, or custom energy solutions, please contact us:

Website: <https://gdroofing.co.za>

Email: sales@gdroofing.co.za

Phone: +27 72 418 9365

Address: 22 Electron Avenue, Isando, Johannesburg, 1600, South Africa

This document is for informational purposes only. Specifications subject to change without notice.

