

Severe packet loss from H3C core switch



Severe packet loss from H3C core switch



Log in to the switch through the console port and restart the switch. If the system reports that a CRC error has occurred or that no system software image is available, use the BootWare menu to ...



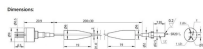
In these fields, packet loss severely impacts the integrity and accuracy of data, making zero packet loss technology crucial for network stability and reliability.



H3C Troubleshooting Guide-HP Comware - Free download as PDF File (.pdf), Text File (.txt) or read online for free. H3C S5820V2 and S5830V2 switch series ...



View and Download H3C S6300 Series troubleshooting manual online. S6300 Series switch pdf manual download.



H3C Troubleshooting Guide-HP Comware - Free download as PDF File (.pdf), Text File (.txt) or read online for free. H3C S5820V2 and S5830V2 switch series Troubleshooting guide.



As shown in Figure 1, in a typical WLAN, if a wireless client experiences severe packet loss when it pings the server, troubleshoot the issue based on the packet forwarding path.



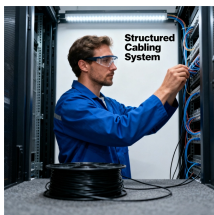
Switches, as core network devices, are responsible for forwarding data packets and managing network traffic. Excessive CPU usage on a switch can lead to decreased network performance and faults, ...



Any time your spanning tree has to reconverge, you'll get packet loss. Spanning tree is not great as a method of redundancy, it's more meant to protect against someone taking the whole network down ...



Use the virtual technologies configuration guide for the switch series to verify whether the switches in the switch series are grouped for IRF compatibility. If they are grouped, make sure the ...



As shown in Figure 1, in a typical WLAN, if a wireless client experiences severe packet loss when it pings the server, troubleshoot the issue based on the packet forwarding path.



Summary: Port packet loss is only a possible cause of Layer 2 and Layer 3 forwarding. If you encounter a Layer 2 or Layer 3 forwarding failure, you still need to troubleshoot according to the above possible ...

Contact Us

For more information, pricing, or custom energy solutions, please contact us:

Website: <https://gdroofing.co.za>

Email: sales@gdroofing.co.za

Phone: +27 72 418 9365

Address: 22 Electron Avenue, Isando, Johannesburg, 1600, South Africa

This document is for informational purposes only. Specifications subject to change without notice.

