

## Simple cable tray sealing



### Overview

WSP units accept any cable size and quantity. Our units install before or after tray and cable. Cable maintenance and changes are simple and easy — no additional parts are needed. Our units are NEM.



## Simple cable tray sealing



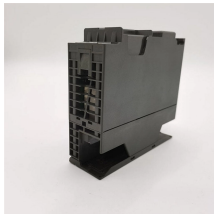
With just one Roxtec entry seal for high cable density applications, ...



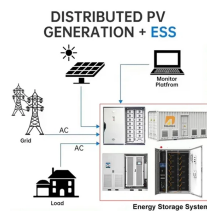
With just one Roxtec entry seal for high cable density applications, you can replace more than 30 conventional cable glands and be sure to have a sealed cable entry. You can even install the ...



This guide will walk you through how to choose an appropriate sealant and apply it correctly to walls, ceilings, and floors. We'll also cover cable entry systems like plates, grommets, ...



Whether you're new to the world of cable management or looking to upgrade your current setup, this beginner's guide will explain everything you need to know about cable entry seals.



Ventilated Cable Tray Cover, 12in Wide, 3.3ft Long, Cabo CVN 300PG. 1 pkg = (3) 3.3ft Covers for (1) 10ft Tray



Its innovative two-part design installs easily around non-compliant cable tray penetrations, rapidly restoring fire resistance. Ideal for retrofit environments, the EZ Path Cable Tray Retrofit Device ...



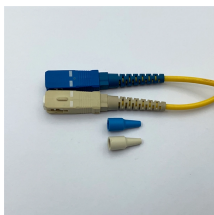
WSP units accept any cable size and quantity. Our units install before or after tray and cable. Cable maintenance and changes are simple and easy — no additional parts are needed. Our units are ...



A simple and effective solution would be “Sleeve Systems.” where cable trays are stopped a few feet short of the fire barrier, a sleeve installed and the tray picked up again on the other side of the barrier.



FIRSTO firestops are designed to seal multi-cable and cable tray penetrations of fire-rated walls and floors. FIRSTO fire stops are developed as a modular system which is simple to assemble around ...



The built in spare capacity makes it easy to open up the seal and change or add cables, without punching new holes or adding material, whenever there is a need.



How do you seal a cable entry hole? This guide covers how to properly seal cable entry holes, what products you need and why it is an important thing to do.

## Contact Us

For more information, pricing, or custom energy solutions, please contact us:

Website: <https://gdroofing.co.za>

Email: [sales@gdroofing.co.za](mailto:sales@gdroofing.co.za)

Phone: +27 72 418 9365

Address: 22 Electron Avenue, Isando, Johannesburg, 1600, South Africa

This document is for informational purposes only. Specifications subject to change without notice.

