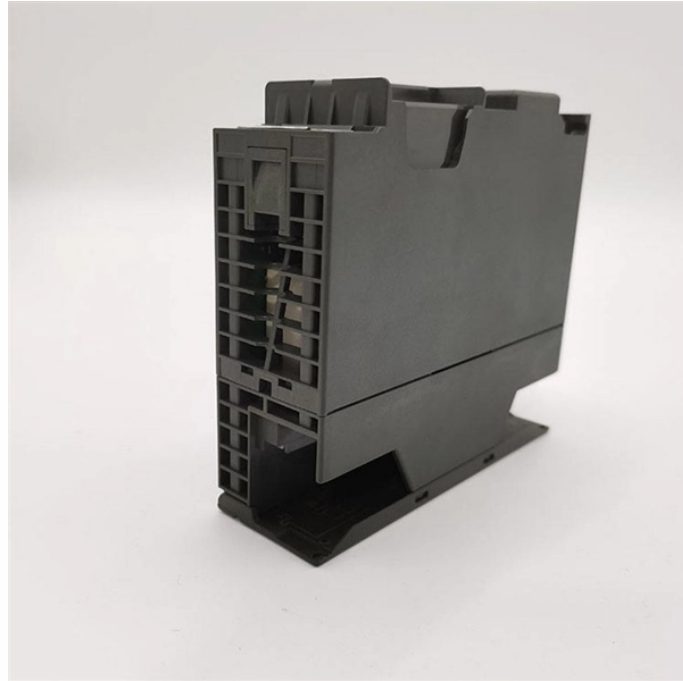


## Single weight of fiber optic cable junction box



## Single weight of fiber optic cable junction box



With the increasing digitization and requirement for high-speed networking, the Bartec Technor junction boxes for fiber optic signals performs dependably in the harshest of environments.



This sc duplex fiber termination box features 1 port at the front, commonly used to connect drop cables to ONT devices in FTTH networks. Made of durable ABS plastic, it provides mechanical protection ...



Furnished with four plugged cable ports (2 aluminum and 2 plastic) for either All-Dielectric Self-Supporting (ADSS) or Optical Ground Wire (OPGW) cables, the splice enclosure can be pre ...



FTTH Termination Box available for the distribution and terminal connection for various kinds of optical fiber system, Some are used for indoor cabling and others are designed to install on ...



CommScope wall boxes offer efficient fiber connectivity. Easy installation, versatile sizes, and superior cable management.



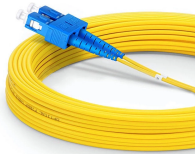
6-Core FTTH Fiber Distribution Termination Box with 6 SC APC Adapters, IP65 Waterproof, Wall-Mount Enclosure for Residential/Commercial Fiber Optic Splicing & Management (with 6 APC Adapter)



This product is designed specifically to provide a safe and secure connection between fiber optic cables. This junction box is made from strong, durable steel, and it has a convenient 415X340X122.5 ...



MR398-JB series fiber optic junction boxes are designed to join two fiber optic cables and environmentally protect the connection. The junction boxes are designed to seal the incoming cables ...



Plastic junction boxes are lightweight, non-conductive, and corrosion-free, making them safe for use in sensitive electronic environments. They are best suited for residential, commercial, and light ...



FTTH Termination Box available for the distribution and terminal ...



A pre-assembled terminal distribution box is an ideal supporting device for the wiring between optical nodes and terminal equipment in fiber optic transmission networks.

## Contact Us

For more information, pricing, or custom energy solutions, please contact us:

Website: <https://gdroofing.co.za>

Email: [sales@gdroofing.co.za](mailto:sales@gdroofing.co.za)

Phone: +27 72 418 9365

Address: 22 Electron Avenue, Isando, Johannesburg, 1600, South Africa

This document is for informational purposes only. Specifications subject to change without notice.

