

Six-core bend-insensitive optical fiber for island applications



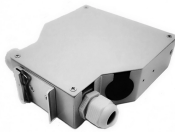
Overview

This guide explores the science behind bend-insensitive fiber, its key types (single-mode and multimode), performance advantages, and real-world applications. Bend-insensitive fiber adds a layer of glass around the core of the fiber which has a lower index of refraction that literally "reflects" the weakly guided modes back into the core when stress normally causes them to be coupled into the cladding. In this article, we will be discussing three of the four variants of G. 657 fiber cables are further divided into two categories: Category A and Category B. A2) are a crucial part of the world's shift towards flexible and reliable connectivity. 657 defines a structured set of performance requirements that balance bend tolerance, compatibility, and. ClearCurve[®] ZBL and LBL bend-improved single-mode fibers are cost-effective solutions designed to meet a wide array of applications and deployment conditions. Therefore, not only should attention be paid to installation and use, but the optical fiber structure should be optimized by researcher to design a.

Six-core bend-insensitive optical fiber for island applications



Bend-insensitive single mode fibres (ITU-T G.657.A1 and G.657.A2) are a crucial part of the world's shift towards flexible and reliable connectivity. They are the only fibres capable of securing the whole fibre ...



Bend-insensitive fiber adds a layer of glass around the core of the fiber which has a lower index of refraction that literally "reflects" the weakly guided modes back into the core when stress normally ...



ITU-T G.657 compliant bend insensitive fibers, including G.657.A1, G.657.A2, and G.657.B3, are crucial to ensure seamless and quick deployment of FTTH networks in small and confined spaces.



In terms of optically bend insensitive fiber, this means that a fiber has been designed to mitigate the optical losses that are associated with tight bend radii.



ClearCurve[®] ZBL and LBL bend-improved single-mode fibers are cost-effective solutions designed to meet a wide array of applications and deployment conditions.



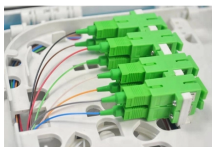
GL FIBER ® bending insensitive single-mode fibre encompasses all the features of FullBand® fibre and provides good resistance to macro-bending. It has low macro-bending sensitivity and low water-peak ...



Bend-insensitive fiber has transformed how we deploy and maintain optical networks. By minimizing loss in tight bends, it simplifies installations, reduces costs, and enables new ...



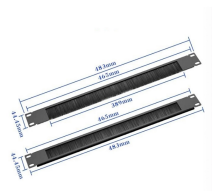
3. Several structural designs for reducing optical fiber bending loss On the one hand, a careful operation is necessary for optical fibers to reduce bending losses.



This article explains G.657 fiber standards, their bend performance intent, subtype differences, and real deployment implications in modern fiber networks.



ClearCurve ® ZBL and LBL bend-improved single-mode fibers are cost-effective solutions designed to meet a wide array of applications and deployment conditions.



This high-speed 1000ft Black 6 Fiber Optic Cable Multimode 50/125 OM3, Plenum Rated, is perfect for your networking needs, both indoor and outdoor. It's designed with YOFC MaxBand OM3 Bend ...

Contact Us

For more information, pricing, or custom energy solutions, please contact us:

Website: <https://gdroofing.co.za>

Email: sales@gdroofing.co.za

Phone: +27 72 418 9365

Address: 22 Electron Avenue, Isando, Johannesburg, 1600, South Africa

This document is for informational purposes only. Specifications subject to change without notice.

