

Slovakia Flame-Retardant Long-Span Cable Tray Processing



Overview

This study investigates the behaviour of a fire propagating over a long length of electrical cables, in order to assess the maximum burning length and the associated heat release rate of the travelling fire.



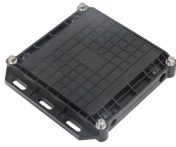
Slovakia Flame-Retardant Long-Span Cable Tray Processing



Cable tray length is selected based on the load to be supported, the distance between the supports (also referred to as the span), and handling and installation constraints.



Check out detailed instructions on fire-resistant installations on our brochure [Download brochure in English: Fire resistant cable support systems v.5](#) In all fire-resistant cable management system ...



These standards study the response of the system formed by the set of fire-resistant cables in service, with the supports and the trays inside a furnace in which the fire is simulated following a defined ...



When fitting cable trays and their accessories, the products are cut on site to create changes of direction, adjust sections, etc. Damage can also occur during handling; as a result, both the ...



Abstract: The new IEEE 1202, IEEE Standard for Flame Testing of Cables for Use in Cable Tray in Industrial and Commercial Occupancies, is described.



The long-span cable tray adopts the structure of a strengthened side plate, which greatly increases the load capacity of the bridge. The product is suitable for the installation of long-span lines.



The fire scenario consists of a set of 3 horizontal cable trays 6 m long, positioned in the corridor of a mechanically ventilated large-scale compartment. The parameters of the study are the ...



The BAKS cable support system for E90 fire-rated installations is a reliable solution that ensures power and signal continuity for at least 90 minutes in fire conditions.



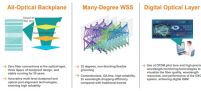
The mostly combustible cable sheaths and insulation allow a fire to spread along the cable at rapid speed. Our tested solutions for cable fire protection can delay the ...



Both ignition sources exposed a 3-ft. (0.9-m) section of the cable tray to the flame. Air flow was maintained to simulate normal ambient plant air flow in plant open space areas.



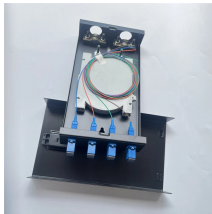
Our wind certification report provides you with list of acceptable B-Line series cable tray supports, fittings and covers based off of the environmental conditions, cable loading, and type of cable tray in your ...



This example therefore highlights the need for a more comprehensive, mechanism-oriented framework to understand and predict the long-term performance of flame-retardant cable ...



These trays are treated with a fire-resistant coating that forms an insulating layer during a fire, significantly reducing the risk of fire spread. This makes them a top choice for high-risk ...



Based on the engineering practice of an oil storage company, this study proposes a modification scheme that entails spraying fire-retardant coatings on the outer surface of a cable tray to...

Contact Us

For more information, pricing, or custom energy solutions, please contact us:

Website: <https://gdroofing.co.za>

Email: sales@gdroofing.co.za

Phone: +27 72 418 9365

Address: 22 Electron Avenue, Isando, Johannesburg, 1600, South Africa

This document is for informational purposes only. Specifications subject to change without notice.

